

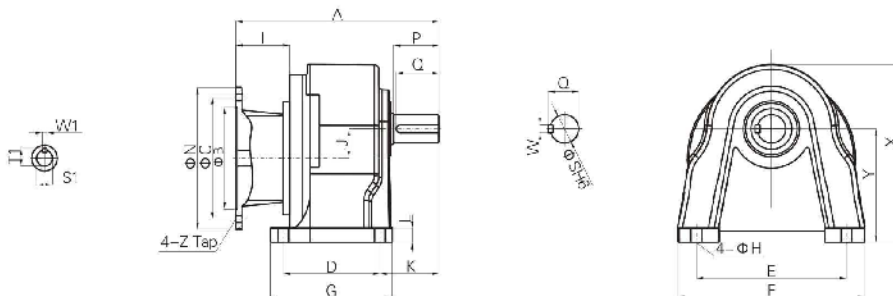
HP-4P	GEAR RATIO	TYPE	A	B	C	D	E	F	G	H	I	J	K	L	N	X	Y	Z	KG
200W 1/4HP	3-10	18	153	110	130	40	110	135	65	9	52.5	16	45	10	158	132	88.5	M8	4
	15-90	22	188	110	130	65	130	159	90	11	52.5	18.2	56	15	158	152	97.5	M8	6
	100-200	28	216	110	130	90	140	180	122	11	52.5	20.8	65	15	158	180	116	M8	8
400W 1/2HP	3-10	22	188	110	130	65	130	160	90	11	52.5	18.2	56	15	158	152	97.5	M8	6
	15-90	28	216	110	130	90	140	180	122	11	52.5	20.8	65	15	158	180	116	M8	8
	100-200	32	250	110	130	130	170	215	160	13	52.5	30.2	76	25	158	210	138.5	M8	14.6
750W 1HP	3-25	28	250	130	165	90	140	180	122	11	90.8	20.8	66	15	198	180	116	M10	11
	30-120	32	288	130	165	130	170	215	160	13	90.8	30.2	76	25	198	210	138.5	M10	19.6
	125-200	40	313	130	165	150	210	260	185	15	90.8	42.2	85	25	198	248	160	M10	38
1500W 2HP	3-25	32	288	130	165	130	170	215	160	13	90.8	30.2	76	25	198	210	138.5	M10	19.6
	30-120	40	313	130	165	150	210	260	185	15	90.8	42.2	85	25	198	248	160	M10	39
2200W 3HP	3-60	40	320	180	215	150	210	260	185	15	95	42.2	85	25	250	248	160	M12	40
	70-120	50	360	180	215	170	265	330	220	18	95	51.7	104	30	250	315	200	M12	45
3700W 5HP	3-25	40	320	180	215	150	210	260	185	15	95	42.2	85	25	250	248	160	M12	50
	30-80	50	360	180	215	170	265	330	220	18	95	51.7	104	30	250	315	200	M12	55

INPUT BORE

KW	BORE		KEYWAY	
	S1	W1	T1	
1/4HP	Φ11	4	12.8	
1/2HP	Φ14	5	16.3	
1HP	Φ19	6	21.8	
2HP	Φ24	8	27.3	
3HP	Φ28	8	31.3	
5HP	Φ28	8	31.3	

OUTPUT SHAFT

SHAFT		KEYWAY			KEY
Sh6	P	W	T	Q	SPEC
Φ18	30	5	20	25	5×5×25
Φ22	40	7	25	35	7×7×35
Φ28	45	7	31	40	7×7×40
Φ32	55	10	35.5	50	10×8×50
Φ40	65	10	43.5	60	10×8×60
Φ50	80	14	54	75	14×9×75



• Available for IEC metric motor.