

机 型 版 本 / VERSIONS

型 式 / TYPE

SC..	SCF..
SC..RC..	
SCA..	SCH..

机 型 版 本 / VERSIONS

型 式 / TYPE

SCAF..	SCHF..
SCA../T..	
SCAZ..	SCHZ..

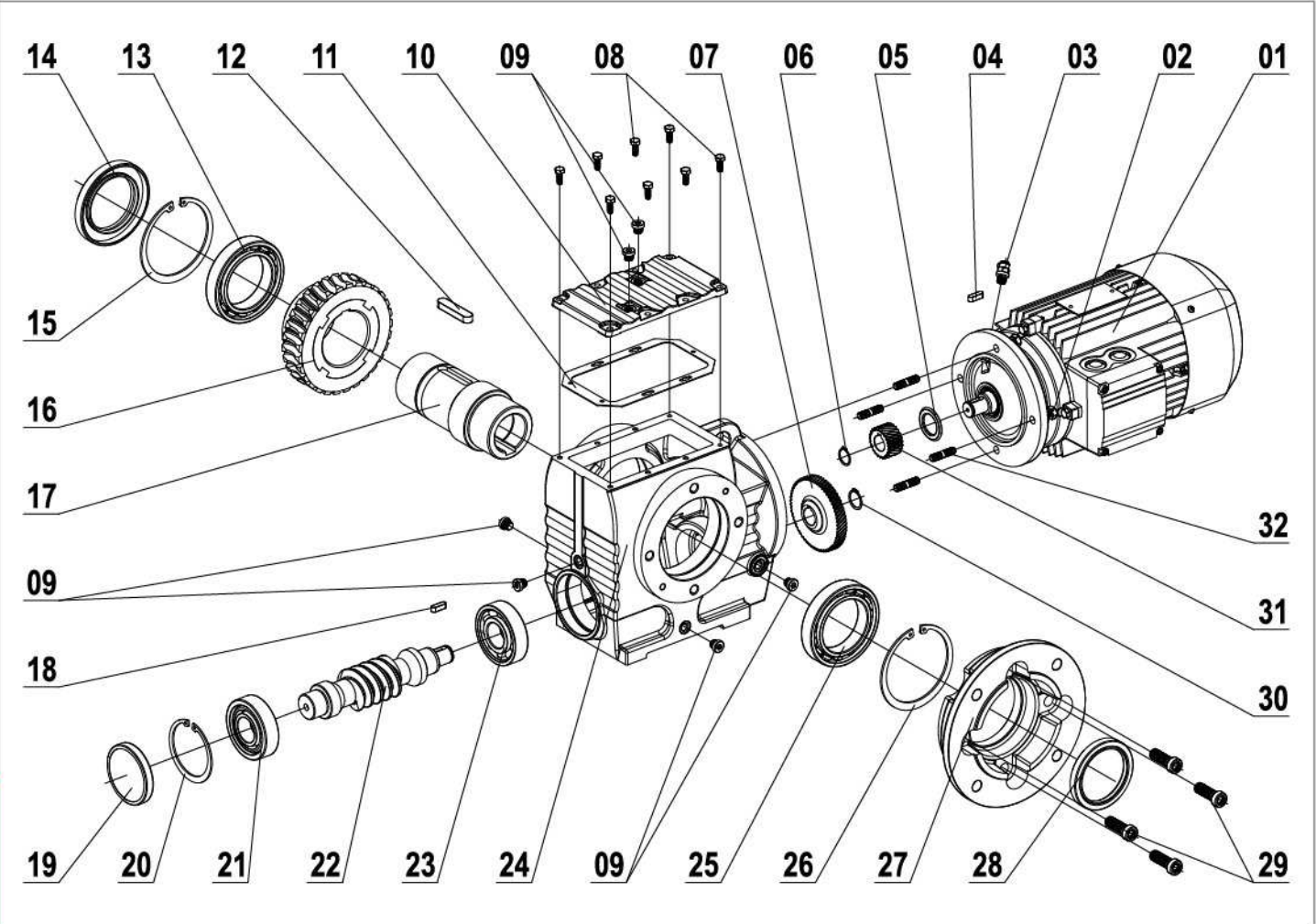
S C 斜 齿 轮 蜗 轮 减 速 机

S C 斜 齿 轮 蜗 轮 减 速 机



机 型 版 本 / VERSIONS

部 件 分 解 图 / PARTS DIAGRAM



代 号 指 示 / PRODUCT CODE

01	电 机	08	外六角螺钉	15	孔用挡圈	22	蜗 杆	29	花形螺钉
02	螺 母	09	油 塞	16	蜗 轮	23	轴 承	30	轴用挡圈
03	透气螺塞	10	盖 板	17	输出轴	24	箱 体	31	齿 轮
04	平 键	11	纸 垫	18	平 键	25	轴 承	32	双头螺柱
05	甩油盘	12	平 键	19	平面油封	26	孔用挡圈		
06	轴用挡圈	13	轴 承	20	孔用挡圈	27	输出法兰		
07	齿 轮	14	油 封	21	轴 承	28	油 封		

机 型 版 本 / VERSIONS

代 号 指 示 / PRODUCT CODE

系列代号 SERIES CODE	SC..	底脚安装斜齿轮-蜗轮减速机	HELICAL-WORM GEARED MOTOR, FOOT-MOUNTED
	SCF..	B5法兰安装斜齿轮-蜗轮减速机	HELICAL-WORM GEARED MOTOR IN B5 FLANGE-MOUNTED
	SCAF..	B5法兰安装空心轴式斜齿轮-蜗轮减速机	HELICAL-WORM GEARED MOTOR IN B5 FLANGE-MOUNTED WITH HOLLOW SHAFT
	SCHF..	B5法兰安装胀紧联接套空心轴式斜齿轮-蜗轮减速机	HELICAL-WORM GEARED MOTOR IN B5 FLANGE-MOUNTED WITH HOLLOW SHAFT AND SHRINK DISK
	SCA..	空心轴式斜齿轮-蜗轮减速机	HELICAL-WORM GEARED MOTOR WITH HOLLOW SHAFT
	SCH..	胀紧联接套空心轴式斜齿轮-蜗轮减速机	HELICAL-WORM GEARED MOTOR WITH HOLLOW SHAFTAND SHRINK DISK
	SCAZ..	B14法兰安装空心轴式斜齿轮-蜗轮减速机	HELICAL-WORM GEARED MOTOR IN B14 FLANGE-MOUNTED WITH HOLLOW SHAFT
	SCHZ..	B14法兰安装胀紧联接套空心轴式斜齿轮-蜗轮减速机	HELICAL-WORM GEARED MOTOR IN B14 FLANGE-MOUNTED WITH HOLLOW SHAFT AND SHRINK DISK
机 座 号 FRAME SIZE	37,47,57,67,77,87,97	SC..机座规格	SC..FRAME SIZE
	37/17,47/17,57/37,67/37,77/37,87/57,97/57	SC..RC..联体机座组合规格	SC..RC..FRAME SIZE
传 动 比 RATIO	6.80,...,288.00	SC..减速比	RATIO OF SC..
电 机 功 率 POWER OF MOTOR	110,...,33818	SC..RC..减速比	RATIO OF SC..RC..
电 机 极 数 POLES OF MOTOR	0.12,...,22KW	电机功率(KW)	POWER OF MOTOR
安 装 方 位 MOUNTING POSITION	2P,4P,6P,8P	电机极数	POLE OF MOTOR
接线盒方位 TERMINAL BOX POSITION	M1,M2,M3,M4,M5,M6	减速电机的安装方位	MOUNTING POSITION
	R(0°)	电机接线盒方位	POSITION OF TERMINAL BOX
	B(90°)		
	L(180°)		
	T(270°)		

产 品 标 注 / PRODUCT NOTES

SC系列减速电机标注说明:

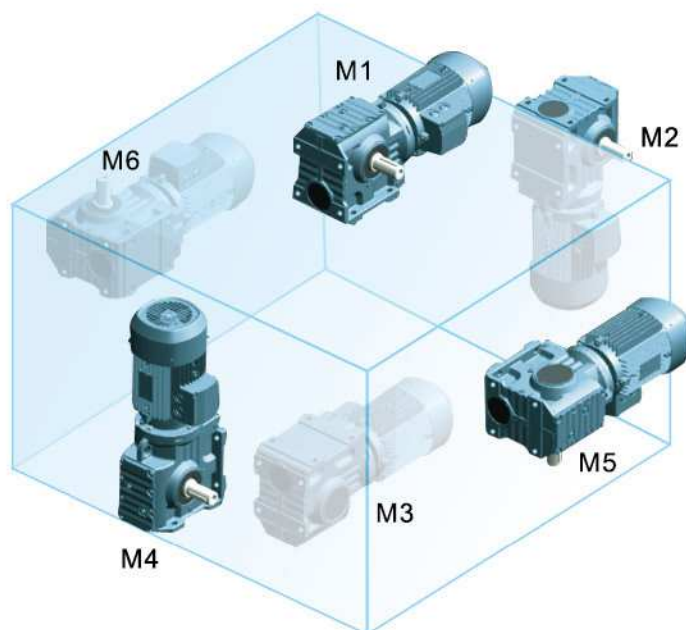
SCA 67 TA - 20.37 / GMS6324 / HF / TF / RS / V / C / E / M3 / R / A / D45

1 系列代号	3 机座号	5 扭力臂 无代码—无扭力臂 TA—扭力臂指向A TB—扭力臂指向B	7 传动比	9 GMS—三相异步电动机 GMSL—高能效三相异步电动机 GBMA—交流制动电动机 GBMD—直流制动电动机 GVVF—变频调速电动机 GBMDVF—变频调速制动电动机 AD—输入模块 IEC—IEC法兰输入模块 NEMA—NEMA法兰输入模块 AQ—伺服电机输入模块	11 手动释放装置 无代码—无手动释放装置 HF—手动释放装置 (锁定释放位置) HR—手动释放装置 (自动返回制动位置)	13 电机热保护 无代码—无电机热保护 TF—电机热保护装置	15 逆止器 无代码—无逆止器 RS—逆止器
17 强制冷却风扇 无代码—无强制冷却风扇 V—强制冷却风扇	19 风扇防护罩 无代码—无风扇防护罩 C—风扇防护罩	21 编码器 无代码—无编码器 E—编码器	23 安装方位 M1,M2,M3,M4,M5,M6	25 电机接线盒方位 R—0° B—90° L—180° T—270°	27 法兰或输出轴指向 A—法兰或轴指向A B—法兰或轴指向B A+B—双出轴或双法兰	29 空心轴孔径	
1 系列代号	2 机座号	3 Torque Arm NO code—NO TorqueArm TA—Torque Arm with A TB—Torque Arm with B	4 Ratio	5 GMS—three-phase asynchronous motor GMSL—high efficiency three phase motor GBMA—AC brake motor GBMD—DC brake motor GVVF—frequency variable speed regulation motor GBMDVF—frequency variable speed regulation brake motor AD—shaft input module IEC—IEC flange input module NEMA—NEMA flange input module AQ—Servo motor input module	6 Brake release No code—No brake release HF—brake release (with lockable manual) brake release HR—brake release (with automatic manual brake disengagement)	7 Thermistor No code—No themistor TF—thermistor sensor	8 Backstop No code—No backstop RS—backstop
3 Forced cooling fan No code—No Forced cooling fan V—Forced cooling fan	19 Fotction cowl for che fan guard No code—No Protection cowl for che fan guard C—Protection cowl for che fan guard	21 Encoder No code—No Encoder E—Encoder	23 Mounting postion M1,M2,M3,M4,M5,M6	25 Position of terminal box R—0° B—90° L—180° T—270°	27 Position of the flange or the OutputShaft A—Shanft or flange with A B—Shanft or flange with B A+B—Shanft or flange with A+B	29 Hollow shaft diameter	

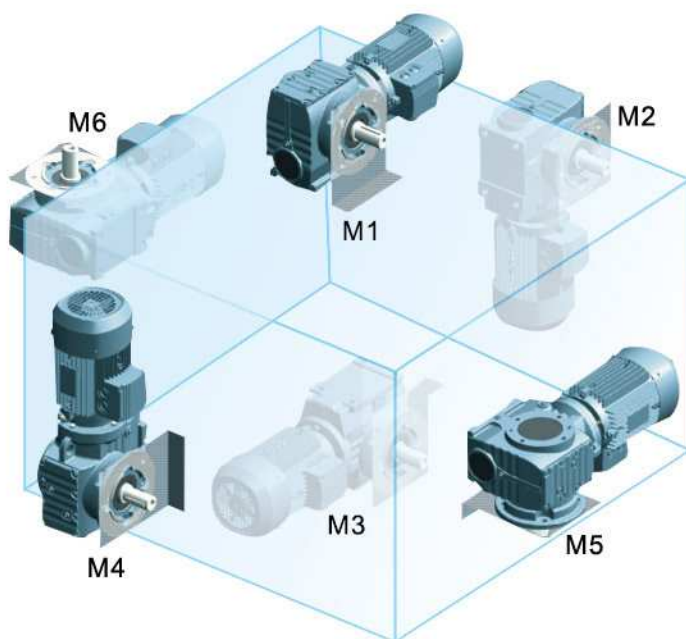


## SC系列安装位置总览/SC MOUNTING POSITIONS

SC. . 安装方位

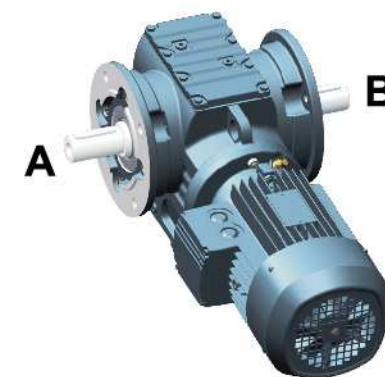


SCF. . 安装方位



输出轴及输出法兰方位图

Position of output shaft and output flange



左图的视图方向为：从电机尾部的风罩向前看。

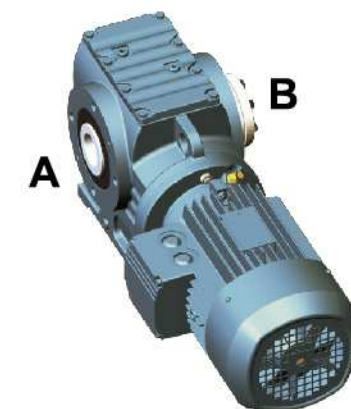
可提供A, B和A+B三种型式的出轴及法兰方位。

The direction of left picture: looking ahead from the fan cover of motor trail.

Provide A, B, A+B form of 3D drawing of output shaft and flange position

胀紧式出轴方位图

Position of shrink output shaft



左图的视图方向为：从电机尾部的风罩向前看。

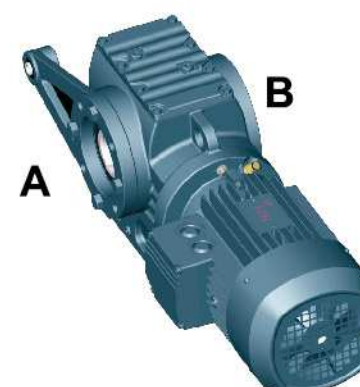
可提供胀紧盘在A端或B端两种出轴方位。

The direction of left picture: looking ahead from the fan cover of motor trail.

Provide two positions of output shaft: shrink disk at A and shrink disk at B.

扭力臂方位图

Position of torque arm



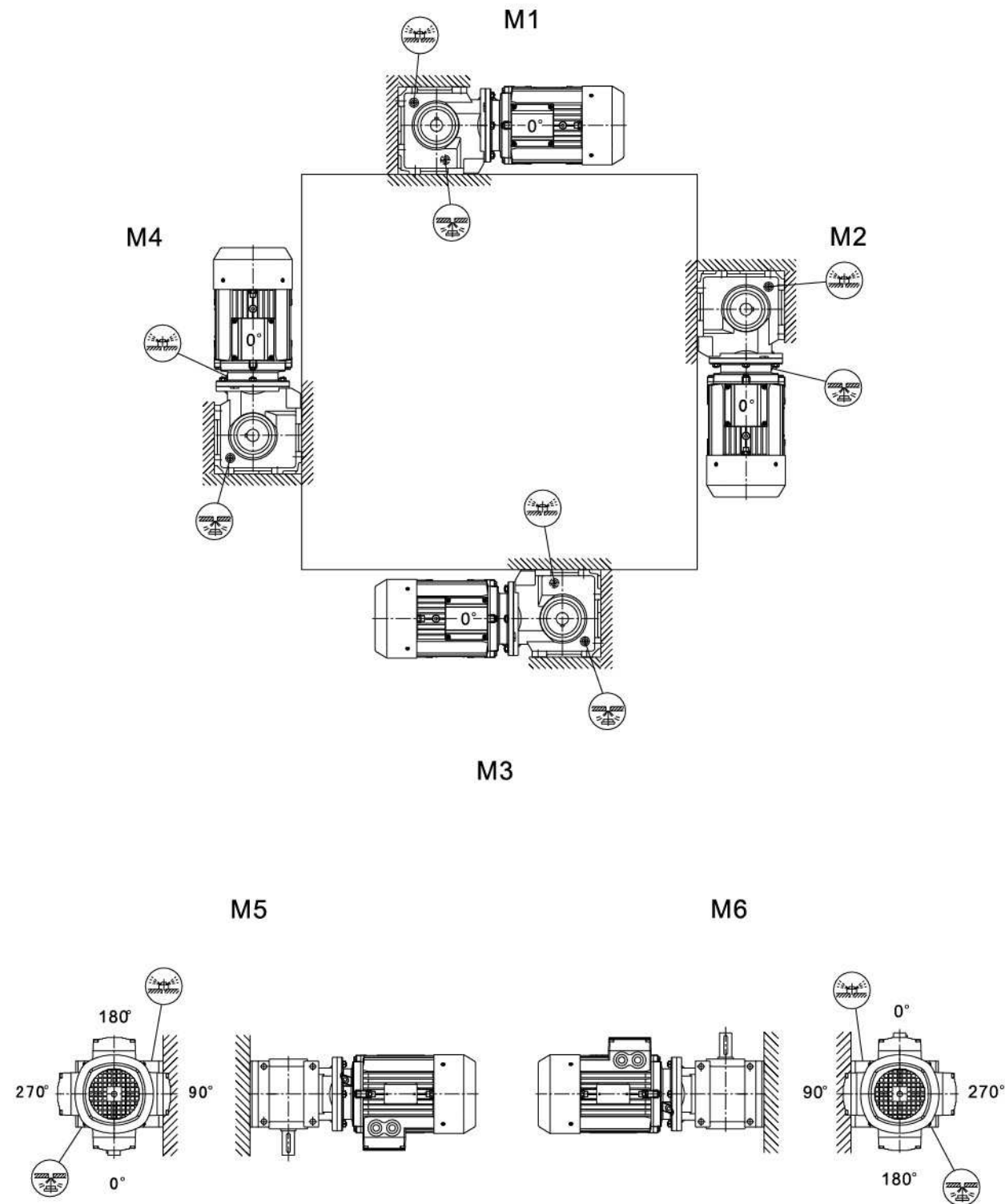
左图的视图方向为：从电机尾部的风罩向前看。

可提供扭力臂在A端或B端两种安装方位。

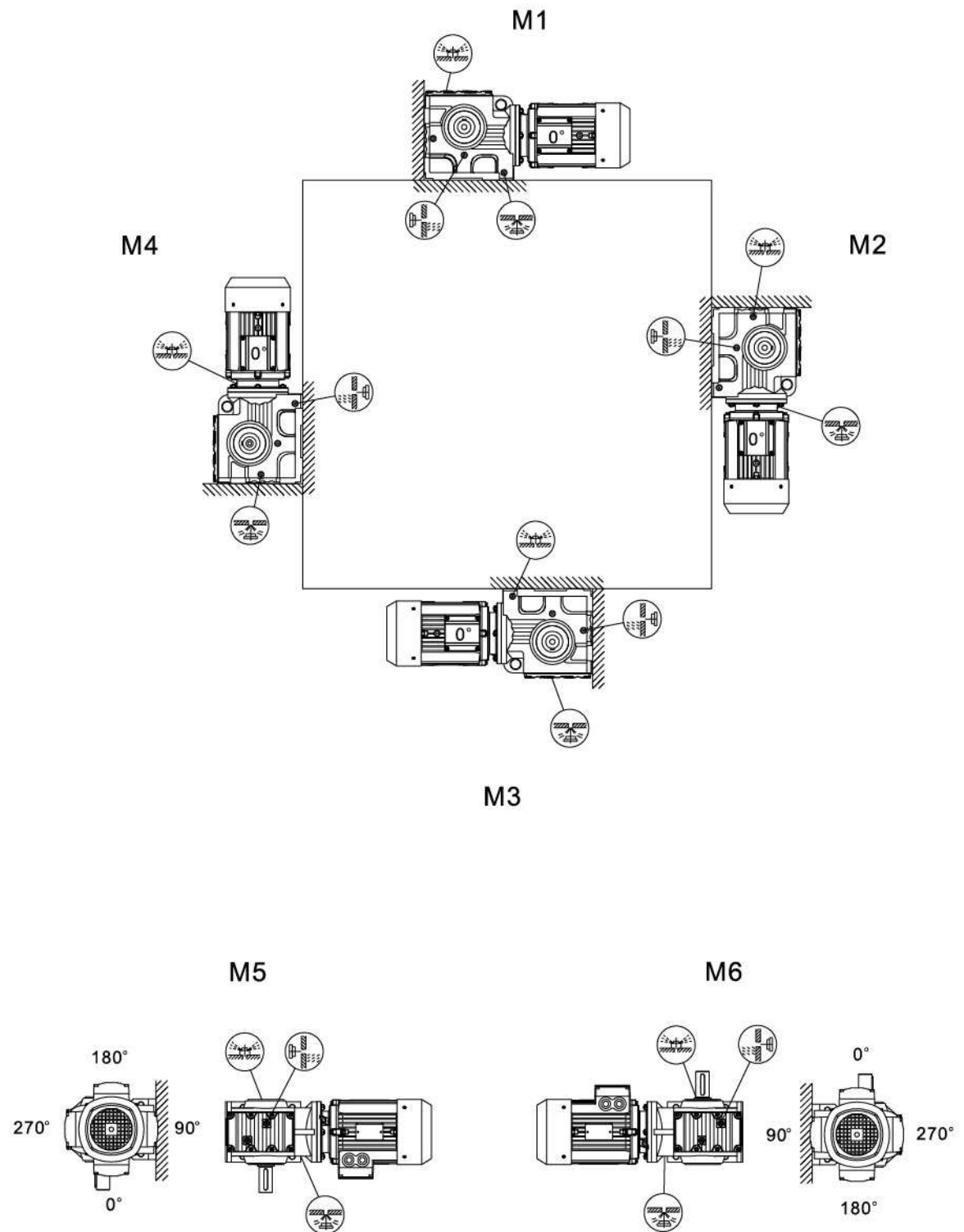
The direction of left picture: looking ahead from the fan cover of motor trail.

Provide two mounting positions: torque arm at A and torque arm at B.

SC37安装方位/SC37 MOUNTING POSITIONS



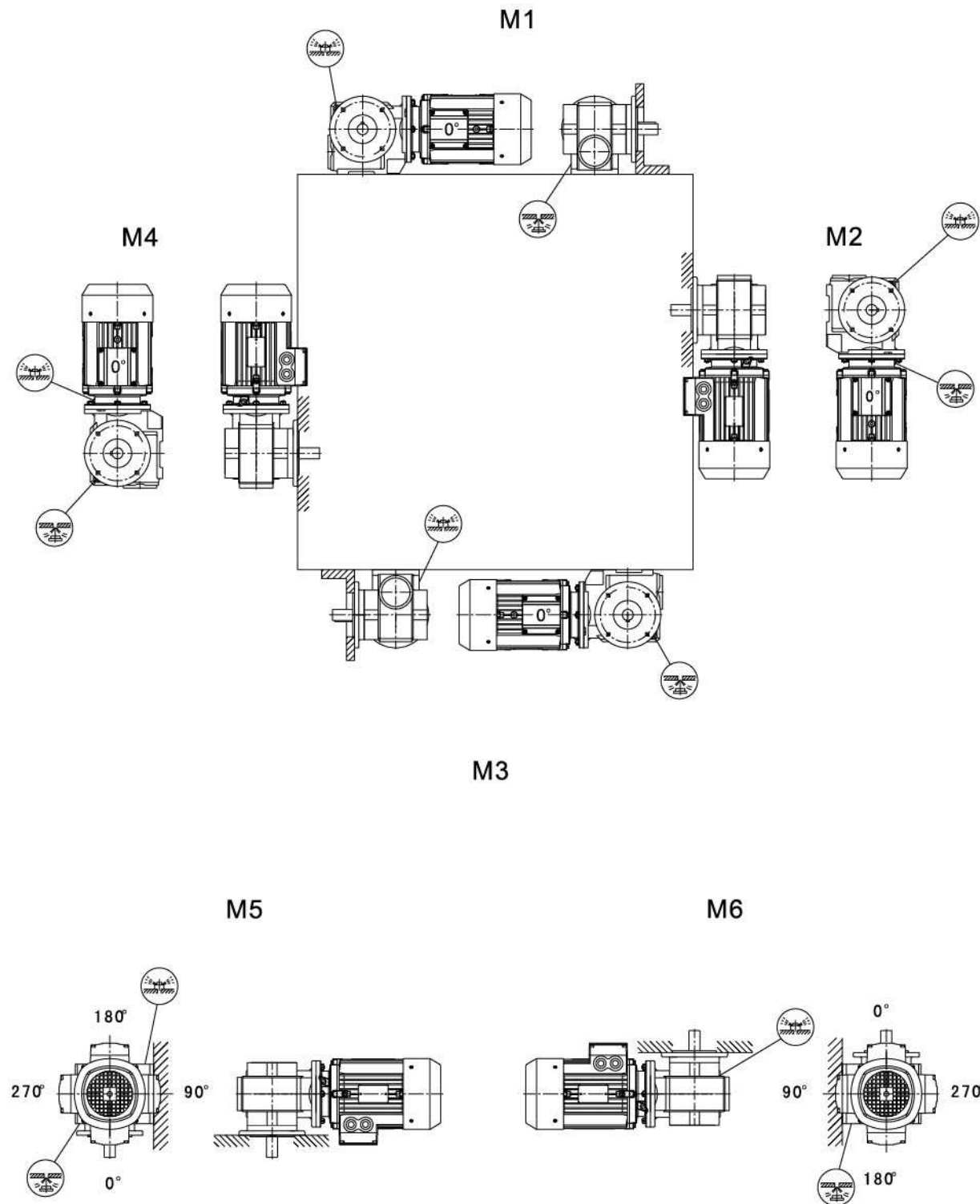
SC47~SC97安装方位/SC47~SC97 MOUNTING POSITIONS





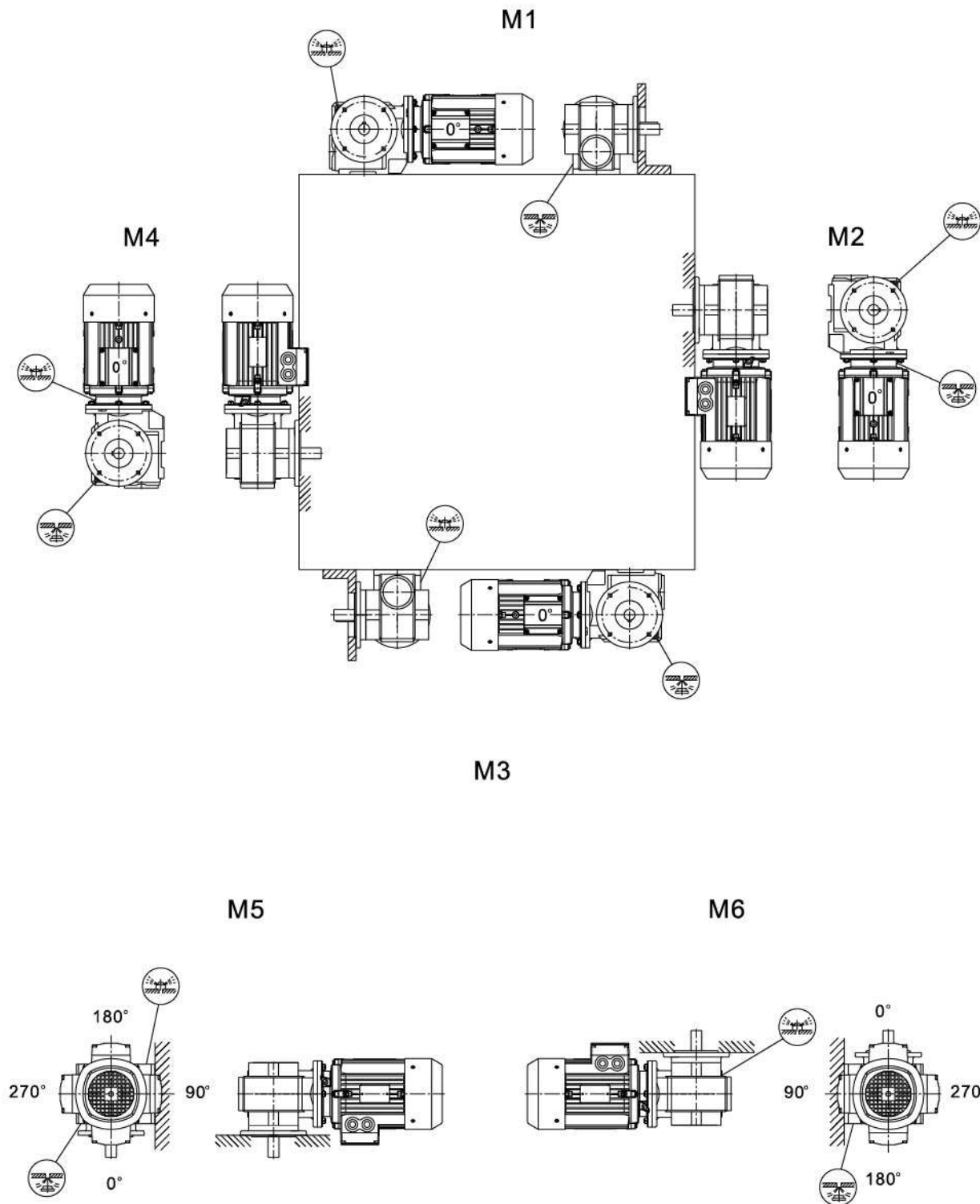
结构及安装方式 / STRUCTURE AND MOUNTING POSITIONS

SCF/SCAF/SCHF37安装方位/SCF/SCAF/SCHF37 MOUNTING POSITIONS

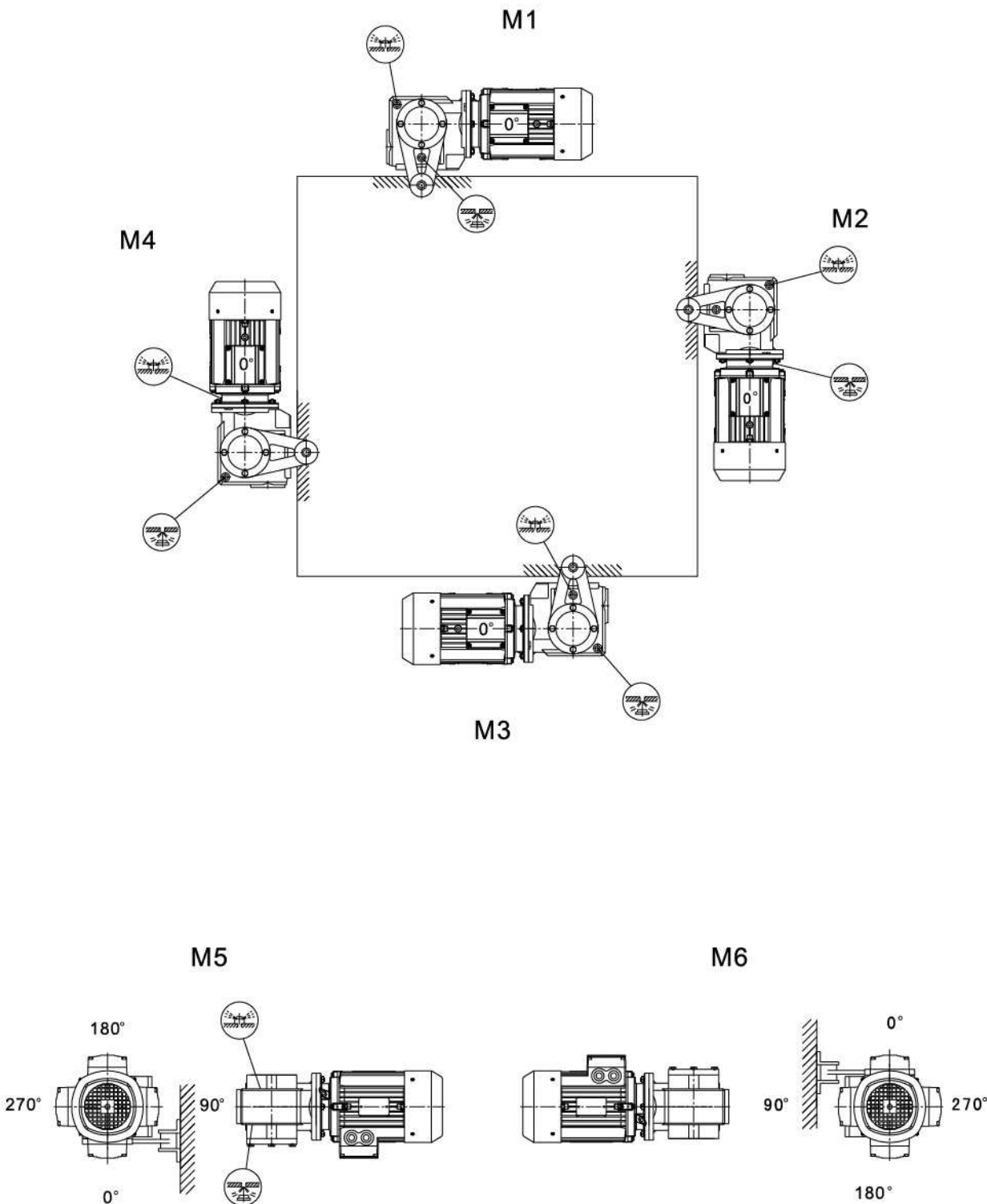


结构及安装方式 / STRUCTURE AND MOUNTING POSITIONS

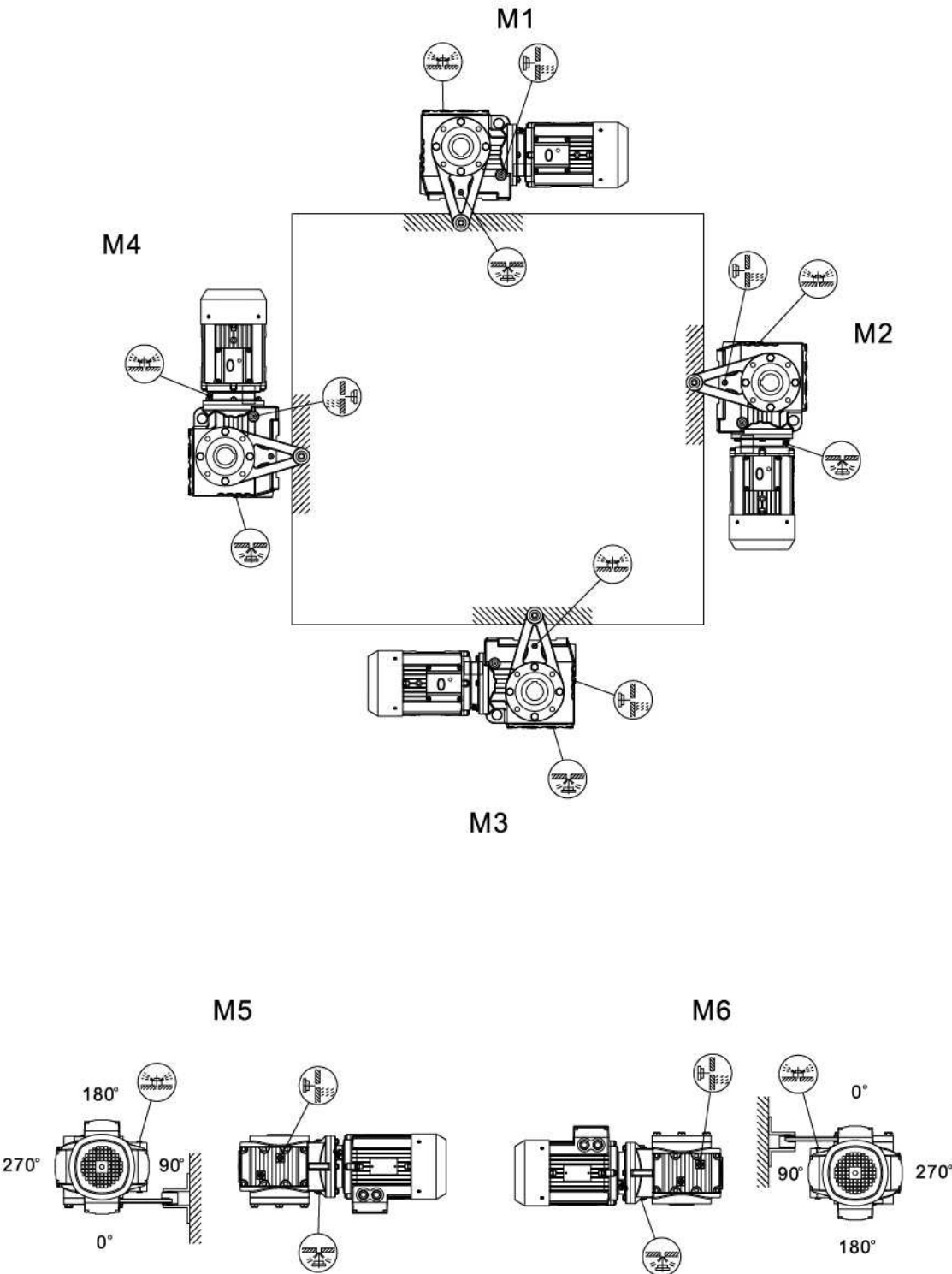
SCF/SCAF/SCHF/SCAZ/SCHZ47~97安装方位/MOUNTING POSITIONS



SCA/SCH37安装方位/SCA/SCH37 MOUNTING POSITIONS



SCA/SCH47~97安装方位/SCA/SCH47~97 MOUNTING POSITIONS





性能 / PERFORMANCE

SC..MS..性能参数/SC..MS..PERFORMANCE PARAMETER

输出转速 n2 1/min	输出扭矩 M2 Nm	传动比 I	服务系数 K	机座号 Frame Size	电机型号 Motor
0.12kw					
0.12	4750	11267	0.90	SC97RC57	MS(H)6314
0.14	4340	10078	0.95	SCF97RC57	MS(H)6314
0.16	3600	8608	1.15	SCA97RC57	MS(H)6314
0.18	3180	7554	1.30	SCAF97RC57	MS(H)6314
0.21	2690	6706	0.95	SC87RC57	MS(H)6314
0.23	2400	5875	1.05	SCF87RC57	MS(H)6314
0.27	1990	5187	1.25	SCA87RC57	MS(H)6314
0.30	1770	4606	1.40	SCAF87RC57	MS(H)6314
0.36	1470	3872	1.70		
0.39	1370	3540	0.90	SC77RC37	MS(H)6314
0.45	1200	3098	1.05	SCF77RC37	MS(H)6314
0.58	1330	2374	0.95	SCA77RC37	MS(H)6314
0.66	1170	2083	1.05	SCAF77RC37	MS(H)6314
0.76	990	1813	1.25		
0.79	940	1745	1.30		
0.86	860	1600	1.45		
0.98	755	1404	1.65		
1.1	660	1245	1.90		
1.2	590	1194	0.95	SC67RC37	MS(H)6314
1.3	530	1045	1.05	SCF67RC37	MS(H)6314
1.5	460	914	1.25	SCA67RC37	MS(H)6314
1.7	420	809	1.35		
1.9	370	712	1.55	SC67RC37	MS(H)6314
2.2	305	615	1.85	SCF67RC37	MS(H)6314
2.5	275	543	2.1	SCA67RC37	MS(H)6314
2.9	225	469	2.5	SCAF67RC37	MS(H)6314
3.3	205	424	2.8		
3.8	187	365	3.0		
2.1	330	655	0.90	SC57RC17	MS(H)6314
2.4	285	574	1.05	SCF57RC17	MS(H)6314
2.7	250	506	1.20	SCA57RC17	MS(H)6314
3.1	215	438	1.40	SCAF57RC17	MS(H)6314
3.6	189	388	1.60		
4.1	169	336	1.80		
4.7	145	294	2.1		
5.1	139	269	2.2		
3.1	215	438	0.85	SC47RC17	MS(H)6314
3.6	189	388	1.00	SCF47RC17	MS(H)6314
4.1	169	336	1.10	SCA47RC17	MS(H)6314
4.7	143	294	1.30	SCAF47RC17	MS(H)6314
5.4	98	257	1.90		
6.0	118	229	1.55		
6.9	102	200	1.80		
7.4	96	187	1.95		
6.8	103	202	0.90	SC37RC17	MS(H)6314
7.7	91	179	1.00	SCF37RC17	MS(H)6314
8.7	82	158	1.15	SCA37RC17	MS(H)6314
9.6	75	144	1.2	SCAF37RC17	MS(H)6314
12	61	118	1.5		
13	57	110	1.6		
6.9	95	201.00*	1.80	SC47	MS(H)6314
7.5	89	184.80*	1.90	SCF47	MS(H)6314
8.7	77	158.12	2.2	SCA47	MS(H)6314
10	68	137.05	2.5	SCAF47	MS(H)6314
11	64	128.10*	2.6		
12	57	110.73	3.0		
8.80	74	157.43	1.25	SC37	MS(H)6314
9.60	68	144.40*	1.35	SCF37	MS(H)6314
11.0	60	122.94	1.55	SCA37	MS(H)6314
13.0	52	106.00*	1.70	SCAF37	MS(H)6314
14.0	49	98.80*	1.75		
16.0	44	86.36	1.95		
17.0	41	80.96	2.1		

性能 / PERFORMANCE

SC..MS..性能参数/SC..MS..PERFORMANCE PARAMETER

输出转速 n2 1/min	输出扭矩 M2 Nm	传动比 I	服务系数 K	机座号 Frame Size	电机型号 Motor
0.18kw					
6.6	154	201.00*	1.9	SC57	MS(H)6324
7.1	143	184.80*	2.1	SCF57	MS(H)6324
8.3	125	158.12	2.4	SCA57	MS(H)6324
9.6	110	137.05	2.7	SCAF57	MS(H)6324
4.3	215	201.00*	0.85	SC47	MS(H)7116
4.7	199	184.80*	0.90	SCF47	MS(H)7116
5.5	173	158.12	1.00	SCA47	MS(H)7116
6.4	153	137.05	1.10	SCAF47	MS(H)7116
6.8	144	128.10*	1.20		
6.6	149	201.00*	1.15	SC47	MS(H)6324
7.1	138	184.80*	1.25	SCF47	MS(H)6324
8.3	121	158.12	1.40	SCA47	MS(H)6324
9.6	107	137.05	1.60	SCAF47	MS(H)6324
10	100	128.10*	1.65		
12	88	110.73	1.90		
14	77	94.08*	2.2		
16	69	84.00*	2.4		
18	60	71.75*	2.8		
19	69	69.39	2.2		
8.4	115	157.43	0.80	SC37	MS(H)6324
9.1	107	144.40*	0.85	SCF37	MS(H)6324
11	93	122.94	1.00	SCA37	MS(H)6324
12	82	106.00*	1.10	SCAF37	MS(H)6324
13	77	98.80*	1.15		
15	68	86.36	1.25		
16	64	80.96	1.30		
18	58	71.44*	1.45		
21	52	63.33	1.60		
24	55	55.93	1.45		
26	51	51.30*	1.60		
30	44	43.68	1.85		
35	38	37.66	2.1		
38	36	35.10*	2.2		
43	32	30.68	2.4	SC37	MS(H)6324
46	30	28.76	2.5	SCF37	MS(H)6324
52	27	25.38*	2.8	SCA37	MS(H)6324
59	24	22.50*	3.1	SCAF37	MS(H)6324
66	22	19.89	2.3		
72	21	18.24*	2.5		
85	18	15.53	2.8		
99	15	13.39	3.2		
106	14	12.48*	3.4		
121	13	10.91	3.8		
129	12	10.23	4.0		
0.25kw					
0.45	2930	2905	0.85	SC87RC57	MS(H)7114
0.50	2560	2586	1.00	SCF87RC57	MS(H)7114
0.56	2300	2335	1.10	SCA87RC57	MS(H)7114
0.63	2000	2054	1.25	SCAF87RC57	MS(H)7114
0.71	1770	1824	1.40		
0.80	1590	1631	1.60		
1.4	930	930	2.7		
1.4	1260	954	1.00	SC77RC37	MS(H)7114
1.6	1110	837	1.10	SCF77RC37	MS(H)7114
1.8	930	714	1.35	SCA77RC37	MS(H)7114
2.0	820	637	1.50	SCAF77RC37	MS(H)7114
2.3	745	574	1.65		
2.6	640	499	1.95		
2.4	650	543	0.85	SC67RC37	MS(H)7114
2.8	550	469	1.05	SCF67RC37	MS(H)7114
3.1	495	424	1.15	SCA67RC37	MS(H)7114
3.6	440	365	1.30	SCAF67RC37	MS(H)7114
4.1	380	319	1.50		
4.6	335	281	1.70		
0.25kw					
4.4	345	294	0.85	SC57RC17	MS(H)7114
4.8	320	269	0.95	SCF57RC17	MS(H)7114
5.7	275	229	1.10	SCA57RC17	MS(H)7114
6.4	250	204	1.20	SCAF57RC17	MS(H)7114
6.9	230	187	1.30		
7.9	200	165	1.50		
9.9	162	131	1.85		
4.0	350	217.41	1.60	SC67	MS(H)7126
4.6	310	190.11	1.80	SCF67	MS(H)7126
4.9	295	180.60*	1.90	SCA67	MS(H)7126
5.5	265	158.45	2.1	SCAF67	MS(H)7126
6.0	245	217.41	2.1	SC67	MS(H)7114
6.8	220	190.11	2.4	SCF67	MS(H)7114
7.2	210	180.60*	2.5	SCA67	MS(H)7114
8.2	187	158.45	2.8	SCAF67	MS(H)7114
9.7	161	134.40*	3.2		
11	147	121.33	3.5		
12	131	106.75*	4.0		
4.4	305	201.00*	1.00	SC57	MS(H)7126
4.8	285	184.80*	1.05	SCF57	MS(H)7126
5.6	245	158.12	1.20	SCA57	MS(H)7126
6.4	220	137.05	1.35	SCAF57	MS(H)7126
6.9	205	128.10*	1.45		
6.5	215	201.00*	1.35	SCF57	MS(H)7114
7.0	200	184.80*	1.45	SC57	MS(H)7114
8.2	176	158.12	1.70	SCA57	MS(H)7114
9.5	155	137.05	1.90	SCAF57	MS(H)7114
10	146	128.10*	2.0		
12	129	110.73	2.3		
14	111	94.08*	2.7		
15	101	84.00*	2.9		
6.5	210	201.00*	0.80	SC47	MS(H)7114
7.0	195	184.80*	0.85	SCF47	MS(H)7114
8.2	170	158.12	1.00	SCA47	MS(H)7114
9.5	150	137.05	1.10	SCAF47	MS(H)7114
10	141	128.10*	1.20		
12	124	110.73	1.35		
14	108	94.08*	1.55		
15	98	84.00*	1.70		
18	85	71.75*	1.95		
19	97	63.39	1.60		
19	80	67.20*	2.1		
20	90	63.80*	1.70		
24	78	54.59	2.0		
27	68	47.32	2.3		
13	108	98.80*	0.80	SC37	MS(H)7114
15	96	86.36	0.90	SCF37	MS(H)7114
16	91	80.96	0.95	SCA37	MS(H)7114
18	81	71.44*	1.05	SCAF37	MS(H)7114
21	73	63.33	1.10		
23	78	55.93	1.05		
25	72	51.30*	1.15		
30	62	43.68	1.30		
35	54	37.66	1.45		
37	51	35.10*	1.55		
42	45	30.68	1.70		
45	42	28.76	1.80		
51	37	25.38*	2.0		
58	33	22.50*	2.2		
65	32	19.89	1.65		
71	29	18.24*	1.80		
84	25	15.53	2.0		
97	22	13.39	2.3		
104	20	12.48*	2.4		
119	18	10.91	2.7		
127	17	10.23	2.8		
144	15	9.02*	3.1		
163	13	8.00*	3.4		
191	11	6.80*	3.8		



性能 / PERFORMANCE

SC..MS..性能参数/SC..MS..PERFORMANCE PARAMETER

输出转速 n2 1/min	输出扭矩 M2 Nm	传动比 I	服务系数 K	机座号 Frame Size	电机型号 Motor
0.25kw					
92	21	28.76	3.0	SC37 SCF37 SCA37 SCAF37	MS(H)6322
105	19	25.38*	3.3		
118	17	22.50*	3.4		
134	16	19.89	2.8		
146	15	18.24*	3.0		
171	13	15.53	3.4		
199	11	13.39	3.8		
213	10	12.48*	4.0		
0.37kW					
0.67	2860	2054	0.90	SC87RC57 SCF87RC57 SCA87RC57 SCAF87RC57	MS(H)7124
0.76	2540	1824	1.00		
0.85	2270	1631	1.10		
1.5	1340	930	1.85		
1.7	1210	831	2.1		
1.9	1310	714	0.95	SC77RC37 SCF77RC37 SCA77RC37 SCAF77RC37	MS(H)7124
2.2	1170	637	1.05		
2.4	1060	574	1.15		
2.8	910	499	1.35		
3.1	800	438	1.55		
3.6	710	389	1.75		
3.8	625	365	0.90	SC67RC37 SCF67RC37 SCA67RC37 SCAF67RC37	MS(H)7124
4.3	545	319	1.05		
4.9	480	281	1.20		
5.6	430	246	1.30		
3.5	645	256.47	2.0	SC77 SCF77 SCA77 SCAF77	MS(H)8016
4.0	575	225.26	2.2		
4.2	545	214.00*	2.3		
4.1	505	217.41	1.10	SC67 SCF67 SCA67 SCAF67	MS(H)8016
4.7	450	190.11	1.25		
5.0	430	180.60*	1.30		
5.7	380	158.45	1.45		
6.4	345	217.41	1.50	SC67 SCF67 SCA67 SCAF67	MS(H)7124
7.3	310	190.11	1.70		
7.6	295	180.60*	1.75		
8.7	260	158.45	2.0		
10	225	134.40*	2.3		
11	205	121.33	2.5		
5.7	360	158.12	0.80	SC57 SCF57 SCA57 SCAF57	MS(H)8016
6.6	315	137.05	0.95		
7.0	300	128.10*	1.00		
8.1	265	110.73	1.10		
9.6	230	94.08*	1.30		
11	205	84.00*	1.45		
6.9	305	201.00*	0.95	SC57 SCF57 SCA57 SCAF57	MS(H)7124
7.5	285	184.80*	1.05		
8.7	245	158.12	1.20		
10	220	137.05	1.35		
11	205	128.10*	1.45		
12	180	110.73	1.65		
15	156	94.08*	1.90		
16	141	84.00*	2.1		
19	122	71.75*	2.4		
20	139	69.39	1.75		
21	115	67.20*	2.5		
22	128	63.80*	1.90		

输出转速 n2 1/min	输出扭矩 M2 Nm	传动比 I	服务系数 K	机座号 Frame Size	电机型号 Motor
0.37kw					
10	210	137.05	0.80	SC47 SCF47 SCA47 SCAF47	MS(H)7124
11	199	128.10*	0.85		
12	175	110.73	0.95		
15	151	94.08*	1.10		
16	137	84.00*	1.20		
19	119	71.75*	1.40		
20	136	69.39	1.15		
21	112	67.20*	1.50		
22	126	63.80*	1.25		
25	109	54.59	1.40		
29	96	47.32	1.60		
31	90	44.22*	1.75		
36	78	38.23	2.0		
42	67	32.48*	2.3		
48	60	29.00*	2.6		
56	52	24.77	3.0		
59	49	23.20*	3.1		
68	46	20.33	2.4		
78	40	17.62	2.8		
84	37	16.47*	3.0		
22	103	63.33	0.80	SC37 SCF37 SCA37 SCAF37	MS(H)7124
27	101	51.30*	0.80		
32	87	43.68	0.95		
37	76	37.66	1.05		
39	71	35.10*	1.10		
45	63	30.68	1.20		
48	59	28.76	1.30		
54	52	25.38*	1.40		
61	47	22.50*	1.55		
69	44	19.89	1.20		
76	41	18.24*	1.30		
89	35	15.53	1.45		
103	30	13.39	1.60		
111	28	12.48*	1.70		
127	25	10.91	1.95		
135	23	10.23	2.0		
153	21	9.02*	2.2		
173	18	8.00*	2.5		
203	16	6.80*	2.7		
104	28	25.38*	2.2	SC37 SCF37 SCA37 SCAF37	MS(H)7112
118	25	22.50*	2.3		
133	24	19.89	1.85		
145	22	18.24*	2.0		
171	19	15.53	2.3		
198	16	13.39	2.6		
212	15	12.48*	2.7		
243	13	10.91	3.0		
259	12	10.23	3.1		
294	11	9.02*	3.3		
0.55kw					
1.0	2850	1332	0.90	SC87RC57 SCF87RC57 SCA87RC57 SCAF87RC57	MS(H)8014
1.1	2570	1191	0.95		
1.3	2240	1032	1.10		
1.5	2070	930	1.20		
1.6	1870	831	1.35		
1.9	1620	719	1.55		
2.2	1420	624	1.75		
2.4	1280	558	1.95		
3.1	1020	435	2.4		
3.1	1230	438	1.00	SC77RC37 SCF77RC37 SCA77RC37 SCAF77RC37	MS(H)8014
3.5	1090	389	1.15		
4.2	920	327	1.35		
4.7	830	289	1.50		
5.4	720	250	1.70		

性能 / PERFORMANCE

SC..MS..性能参数/SC..MS..PERFORMANCE PARAMETER

输出转速 n2 1/min	输出扭矩 M2 Nm	传动比 I	服务系数 K	机座号 Frame Size	电机型号 Motor
0.55kw					
5.5	660	246	0.85	SC67RC37 SCF67RC37 SCA67RC37 SCAF67RC37	MS(H)8014
6.2	590	221	0.95		
6.9	536	198	1.05		
8.1	460	168	1.25		
3.1	1130	288.00*	2.2	SC87 SCF87 SCA87 SCAF87	MS(H)8026
3.5	1020	258.18	2.4		
4.0	900	222.40*	2.7		
4.4	820	202.96	2.9		
3.5	960	256.47	1.35	SC77 SCF77 SCA77 SCAF77	MS(H)8026
4.0	850	225.26	1.50		
4.2	810	214.00*	1.55		
4.8	730	189.09	1.75		
5.6	635	161.60*	2.0		
5.3	660	256.47	1.90	SC77 SCF77 SCA77 SCAF77	MS(H)8014
6.0	590	225.26	2.2		
6.4	560	214.00*	2.3		
7.2	505	189.09	2.5		
6.3	520	217.41	1.00	SC67 SCF67 SCA67 SCAF67	MS(H)8014
7.2	465	190.11	1.10		
7.5	445	180.60*	1.15		
8.6	395	158.45	1.30		
10	340	134.40*	1.55		
11	310	121.33	1.65		
13	275	106.75*	1.85		
13	265	100.80*	1.95		
16	230	85.83	2.3		
18	230	75.06	2.1		
21	205	65.63	2.4		
9.6	340	94.08*	0.85	SC57 SCF57 SCA57 SCAF57	MS(H)8026
11	305	84.00*	0.95		
13	265	71.75*	1.10		
13	250	67.20*	1.15		
16	245	54.59	1.10		
19	215	47.32	1.25		
20	200	44.22*	1.35		
24	176	38.23	1.55		
8.6	370	158.12	0.80	SC57 SCF57 SCA57 SCAF57	MS(H)8014
9.9	330	137.05	0.90		
11	310	128.10*	0.95		
12	270	110.73	1.10		
14	235	94.08*	1.25		
16	210	84.00*	1.40		
19	184	71.75*	1.55		
20	174	67.20*	1.65		
25	167	54.59	1.45		
29	146	47.32	1.70		
31	137	44.22*	1.80		
36	120	38.23	2.1	SC57 SCF57 SCA57 SCAF57	MS(H)8014
42	103	32.48*	2.4		
47	92	29.00*	2.7		
55	79	24.77	3.1		
59	75	23.20*	3.3		
67	69	20.33	2.4		

输出转速 n2 1/min	输出扭矩 M2 Nm	传动比 I	服务系数 K	机座号 Frame Size	电机型号 Motor
0.55kw					
16	205	84.00*	0.80	SC47 SCF47 SCA47 SCAF47	MS(H)8014
19	179	71.75*	0.95		
20	169	67.20*	1.00		
25	165	54.59	0.95		
29	144	47.32	1.10		
31	135	44.22*	1.15		
36	118	38.23	1.30		
42	101	32.48*	1.55		
47	91	29.00*	1.70		
55	78	24.77	2.0		
59	74	23.20*	2.1		
67	69	20.33	1.6		
77	60	17.62	1.85		
83	56	16.47*	1.95		
96	49	14.24	2.3		
112	42	12.10*	2.6		
126	37	10.80*	2.9		
147	32	9.23*	3.4		
44	94	30.68	0.80	SC37 SCF37 SCA37 SCAF37	MS(H)8014
47	89	28.76	0.85		
54	79	25.38*	0.95		
60	70	22.50*	1.05		
71	60	19.13*	1.20		
88	53	15.53	0.95		
102	46	13.39	1.10		
109	43	12.48*	1.15		
125	37	10.91	1.30		
133	35	10.23	1.35		
151	31	9.02*	1.50		
170	28	8.00*	1.60		
200	24	6.80*	1.80		
94	46	28.76	1.40	SC37 SCF37 SCA37 SCAF37	MS(H)7122
106	41	25.38*	1.50		
120	37	22.50*	1.55		
136	34	19.89	1.30		
148	32	18.24*	1.40		
174	27	15.53	1.55		
202	24	13.39	1.75		
216	22	12.48*	1.85		
248	19	10.91	2.0		
264	18	10.23	2.1		
299	16	9.02*	2.3		
338	14	8.00*	2.5		
397	12	6.80*	2.4		
0.75kw					
1.1	4910	1223	0.85	SC97RC57 SCF97RC57 SCA97RC57 SCAF97RC57	MS(H)8024
1.3	4300	1070	1.00		
1.5	3710	928	1.15		
1.7	3270	824	1.30		
1.9	2330	714	1.80		
2.2	2480	626	1.70		
2.6	2130	538	1.95		
2.9	1930	484	2.2		
1.3	3060	1032	0.80	SC87RC57 SCF87RC57 SCA87RC57 SCAF87RC57	MS(H)8024
1.5	2820	930	0.90		
1.7	2540	831	1.00		
1.9	2220	719	1.15		
2.2	1940	624	1.30		
2.5	1750	558	1.45		
3.2	1400	435	1.75		
4.3	1070	323	2.2		



性能 / PERFORMANCE

SC..MS..性能参数/SC..MS..PERFORMANCE PARAMETER

输出转速 n2 1/min	输出扭矩 M2 Nm	传动比 I	服务系数 K	机座号 Frame Size	电机型号 Motor
0.75kw					
4.2	1250	327	1.00	SC77RC37	MS(H)8024
4.8	1120	289	1.10	SCF77RC37	MS(H)8024
5.5	970	250	1.25	SCA77RC37	MS(H)8024
6.3	860	219	1.45	SCAF77RC37	MS(H)8024
3.1	1540	288.00*	1.60	SC87	MS(H)90S-6
3.5	1400	258*18	1.75	SCF87	MS(H)90S-6
4.0	1220	222.40*	1.95	SCA87	MS(H)90S-6
4.4	1120	202.96	2.1	SCAF87	MS(H)90S-6
4.8	1050	288.00*	2.2	SC87	MS(H)8024
5.4	950	258*18	2.4	SCF87	MS(H)8024
6.2	830	222.40*	2.8	SCA87	MS(H)8024
6.8	765	202.96	3.0	SCAF87	MS(H)8024
4.0	1160	225.26	1.10	SC77	MS(H)90S-6
4.2	1110	214.00*	1.15	SCF77	MS(H)90S-6
4.8	990	189.09	1.30	SCA77	MS(H)90S-6
5.6	860	161.60*	1.45	SCAF77	MS(H)90S-6
5.4	890	256.47	1.45	SC77 SCF77 SCA77 SCAF77	MS(H)8024 MS(H)8024 MS(H)8024 MS(H)8024
6.1	790	225.26	1.60		
6.5	755	214.00*	1.70		
7.3	675	189.09	1.90		
8.5	585	161.60*	2.2		
9.3	545	148.15	2.3		
11	480	130.00*	2.5		
11	460	123.20*	2.6		
13	405	107.83	2.9		
7.3	625	190.11	0.85	SC67 SCF67 SCA67 SCAF67	MS(H)8024 MS(H)8024 MS(H)8024 MS(H)8024
7.6	595	180.60*	0.85		
8.7	530	158.45	1.00		
10	460	134.40*	1.15		
11	420	121.33	1.25		
13	375	106.75*	1.40		
14	355	100.80*	1.45		
16	305	85.83	1.70		
18	310	75.06	1.55	SC57 SCF57 SCA57 SCFA57	MS(H)8024 MS(H)8024 MS(H)8024 MS(H)8024
21	275	65.63	1.75		
22	260	62.35*	1.85		
25	230	54.70*	2.1		
30	198	46.40*	2.4		
13	365	71.75*	0.80		
13	345	67.20*	0.85		
16	295	56.61	1.00		
19	295	47.32	0.90	SC57 SCF57 SCA57 SCFA57	MS(H)90S-6 MS(H)90S-6 MS(H)90S-6 MS(H)90S-6
20	275	44.22*	1.00		
12	365	110.73	0.80		
15	315	94.08*	0.95		
16	285	84.00*	1.05		
19	250	71.75*	1.15		
21	235	67.20*	1.20		
25	225	54.59	1.10		
29	197	47.32	1.25	SC57 SCF57 SCA57 SCFA57	MS(H)8024 MS(H)8024 MS(H)8024 MS(H)8024
31	185	44.22*	1.35		
36	161	38.23	1.50		
42	138	32.48*	1.80		
48	124	29.00*	2.0		
56	107	24.77	2.3		
59	100	23.20*	2.5		
68	93	20.33	1.80		
78	81	17.62	2.1	SC97 SCF97 SCA97 SCAF97	MS(H)90L-6 MS(H)90L-6 MS(H)90L-6 MS(H)90L-6
84	76	16.47*	2.2		
97	66	14.24	2.6		

性能 / PERFORMANCE

SC..MS..性能参数/SC..MS..PERFORMANCE PARAMETER

输出转速 n2 1/min	输出扭矩 M2 Nm	传动比 I	服务系数 K	机座号 Frame Size	电机型号 Motor
1.1kw					
3.2	2220	288.00*	1.10	SC87 SCF87 SCA87 SCAF87	MS(H)90L-6 MS(H)90L-6 MS(H)90L-6 MS(H)90L-6
3.6	2010	258.18	1.20		
4.1	1760	222.40*	1.35		
4.5	1620	202.96	1.45		
4.9	1520	288.00*	1.50	SC87 SCF87 SCA87 SCAF87	MS(H)90S-4 MS(H)90S-4 MS(H)90S-4 MS(H)90S-4
5.4	1370	258.18	1.65		
6.3	1200	222.40*	1.90		
6.9	1100	202.96	2.1		
7.8	990	180.00*	2.2		
9.2	840	151.30	2.6		
6.2	1150	225.26	1.10		
6.5	1100	214.00*	1.15		
7.4	980	189.09	1.30		
8.7	850	161.60*	1.50		
9.5	785	148.15	1.60		
11	695	130.00*	1.75		
11	665	123.20*	1.80		
13	585	107.83	2.0		
14	535	97.14	2.1		
16	470	85.22	2.3		
12	605	121.33	0.85	SC67 SCF67 SCA67 SCAF67	MS(H)90S-4 MS(H)90S-4 MS(H)90S-4 MS(H)90S-4
13	540	106.75*	0.95		
14	515	100.80*	1.00		
16	445	85.83	1.15		
18	405	78.00*	1.30		
21	400	65.63	1.20		
22	380	62.35*	1.25		
26	335	54.70	1.45		
30	385	46.40*	1.65		
33	260	41.89	1.85		
38	230	36.85	2.1		
40	220	34.80*	2.2		
47	187	29.63	2.6		
20	360	71.75*	0.80	SC57 SCF57 SCA57 SCAF57	MS(H)90S-4 MS(H)90S-4 MS(H)90S-4 MS(H)90S-4
21	340	67.20*	0.85		
25	290	56.61	0.90		
30	285	47.32	0.85		
32	265	44.22*	0.90	SC57 SCF57 SCA57 SCAF57	MS(H)90S-4 MS(H)90S-4 MS(H)90S-4 MS(H)90S-4
37	235	38.23	1.05		
43	200	32.48*	1.25		
48	179	29.00*	1.35		
57	154	24.77	1.60		
60	145	23.20*	1.70		
72	123	19.54	1.75		
79	117	17.62	1.45		
85	110	16.47*	1.55		
98	95	14.24	1.75		
116	82	12.10*	2.1		
130	73	10.80*	2.3		
152	63	9.23*	2.7		
48	177	29.00*	0.90		
57	153	24.77	1.00		
60	143	23.20*	1.05		
72	122	19.54	1.20		
79	117	17.62	0.95		
85	109	16.47*	1.00		
98	95	14.24	1.15	SC47 SCF47 SCA47 SCAF47	MS(H)90S-4 MS(H)90S-4 MS(H)90S-4 MS(H)90S-4
116	81	12.10*	1.35		
130	73	10.80*	1.50		
152	63	9.23*	1.75		
162	59	8.64*	1.85		
192	50	7.28	2.1		

输出转速 n2 1/min	输出扭矩 M2 Nm	传动比 I	服务系数 K	机座号 Frame Size	电机型号 Motor
1.1kw					
175	54	8.00*	0.85	SC37 SCF37 SCA37 SCAF37	MS(H)90S-4 MS(H)90S-4 MS(H)90S-4 MS(H)90S-4
206	46	6.80*	0.95		
202	47	13.39	0.85		
216	44	12.48*	0.90		
248	39	10.91	1.00	SC37 SCF37 SCA37 SCAF37	MS(H)8022 MS(H)8022 MS(H)8022 MS(H)8022
264	36	10.23	1.05		
299	32	9.02*	1.10		
338	28	8.00*	1.25		
397	24	6.80*	1.20		
1.5kw					
2.0	4640	714	0.90	SC97RC57 SCF97RC57 SCA97RC57 SCAF97RC57	MS(H)90L-4 MS(H)90L-4 MS(H)90L-4 MS(H)90L-4
2.2	4950	626	0.85		
2.6	4260	538	1.00		
2.9	3850	484	1.10		
3.4	3350	420	1.25		
3.8	3030	376	1.40		
4.3	2660	327	1.60	SC87RC57 SCF87RC57 SCA87RC57 SCAF87RC57	MS(H)90L-4 MS(H)90L-4 MS(H)90L-4 MS(H)90L-4
2.9	3090	485	0.80		
3.2	2810	435	0.85		
3.7	2470	378	1.00		
4.4	2150	323	1.10		
5.0	1890	281	1.25		
5.5	2020	255	1.00		
6.4	1770	222	1.10		
6.9	1650	205	1.20	SC97 SCF97 SCA97 SCAF97	MS(H)100L-6 MS(H)100L-6 MS(H)160L-6 MS(H)100L-6
3.2	3150	286.40*	1.35		
3.5	2910	262.22	1.45		
4.0	2600	231.67	1.60		
4.7	2230	196.52	1.90		
4.9	2130	286.40*	1.90	SC97 SCF97 SCA97 SCAF97	MS(H)90L-4 MS(H)90L-4 MS(H)90L-4 MS(H)90L-4
5.4	1970	262.22	2.0		
6.1	1760	231.67	2.3		
7.2	1510	196.52	2.7		
3.6	2740	258.18	0.90	SC87 SCF87 SCA87 SCAF87	MS(H)100L-6 MS(H)100L-6 MS(H)160L-6 MS(H)100L-6
4.1	2390	222.40*	1.00		
4.5	2200	202.96	1.10		
5.1	1980	180.00*	1.20		
4.9	2060	288.00*	1.10	SC87 SCF87 SCA87 SCAF87	MS(H)90L-4 MS(H)90L-4 MS(H)90L-4 MS(H)90L-4
5.5	1860	258.18	1.20		
6.3	1630	222.40*	1.40		
7.0	1500	202.96	1.50		
7.8	1340	180.00*	1.65		
9.3	1140	151.30	1.90		
10	1060	139.05	2.0		
11	950	123.48	2.2		
13	850	110.40*	2.4		
14	770	99.26	2.5		
7.5	1330	189.09	0.95	SC77 SCF77 SCA77 SCAF77	MS(H)90L-4 MS(H)90L-4 MS(H)90L-4 MS(H)90L-4
8.7	1150	161.06*	1.10		
9.5	1060	148.15	1.15		
11	940	130.00*	1.30		
11	900	123.20*	1.35		
13	795	107.83	1.45		
15	725	97.14	1.60		
17	640	85.22	1.70		
19	650	75.09	1.70		
20	620	71.33	1.80		
21	510	66.67	2.0		
22	550	63.03	2.0		
25	440	59.92	2.3		
26	470	53.87	2.3		
29	435	49.38	2.5		
33	385	43.33	2.9		



性能 / PERFORMANCE

SC..MS..性能参数/SC..MS..PERFORMANCE PARAMETER

输出转速 n2 1/min	输出扭矩 M2 Nm	传动比 I	服务系数 K	机座号 Frame Size	电机型号 Motor
1.5kW					
16	600	85.83	0.85	SC67 SCF67 SCA67 SCAF67	MS(H)90L-4
18	550	78.00*	0.95		MS(H)90L-4
21	540	65.63	0.90		MS(H)90L-4
23	515	62.35*	0.95		MS(H)90L-4
26	455	54.70	1.05	SC67 SCF67 SCA67 SCAF67	MS(H)90L-4
30	390	46.40*	1.25		MS(H)90L-4
34	355	41.89	1.35		MS(H)90L-4
38	310	36.85	1.55		MS(H)90L-4
41	295	34.80*	1.60		MS(H)90L-4
48	255	29.63	1.90		MS(H)90L-4
52	230	26.93	2.10		MS(H)90L-4
58	220	24.44	1.55		MS(H)90L-4
61	210	23.22*	1.60		MS(H)90L-4
69	186	20.37	1.85		MS(H)90L-4
82	159	17.28*	2.1		MS(H)90L-4
90	144	15.60*	2.4		MS(H)90L-4
103	127	13.73*	2.7		MS(H)90L-4
43	270	32.48*	0.90	SC57 SCF57 SCA57 SCAF57	MS(H)90L-4
49	245	29.00*	1.00		MS(H)90L-4
57	210	24.77	1.15		MS(H)90L-4
61	196	23.20*	1.25		MS(H)90L-4
72	167	19.54	1.30		MS(H)90L-4
80	159	17.62	1.05		MS(H)90L-4
86	149	16.47*	1.15		MS(H)90L-4
99	129	14.24	1.30		MS(H)90L-4
117	110	12.10*	1.55		MS(H)90L-4
131	99	10.80*	1.70		MS(H)90L-4
153	85	9.23*	2.0		MS(H)90L-4
99	129	14.24	0.85	SC47 SCF47 SCA47 SCAF47	MS(H)90L-4
117	110	12.10*	1.00		MS(H)90L-4
131	99	10.80*	1.10		MS(H)90L-4
153	85	9.23*	1.30		MS(H)90L-4
163	79	8.64*	1.35	SC47 SCF47 SCA47 SCAF47	MS(H)90L-4
194	67	7.28	1.55		MS(H)90L-4
299	44	9.02*	0.85	SC37 SCF37 SCA37 SCAF37	MS(H)90S-2
338	39	8.00*	0.90		MS(H)90S-2
397	33	6.80*	0.90		MS(H)90S-2
2.2kW					
3.4	4950	420	0.85	SC97RC57 SCF97RC57 SCA97RC57 SCAF97RC57	MS(H)100L1-4
3.8	4460	376	0.95		MS(H)100L1-4
4.3	3910	327	1.05		MS(H)100L1-4
4.9	3460	287	1.20		MS(H)100L1-4
5.6	3030	252	1.40	SC97 SCF97 SCA97 SCAF97	MS(H)100L1-4
3.3	4530	286.40*	0.95		MS(H)112M-6
3.6	4180	262.22	1.00		MS(H)112M-6
4.1	3730	231.67	1.15		MS(H)112M-6
4.8	3210	196.52	1.30		MS(H)112M-6
4.9	3130	286.40*	1.30		MS(H)100L1-4
5.4	2890	262.22	1.40		MS(H)100L1-4
6.1	2570	231.67	1.55		MS(H)100L1-4
7.2	2210	196.52	1.80		MS(H)100L1-4
7.8	2050	180.95	1.90		MS(H)100L1-4
8.7	1840	161.74	2.1		MS(H)100L1-4
9.7	1670	145.60*	2.2		MS(H)100L1-4
11	1520	131.85	2.4	SC97RC57 SCF97RC57 SCA97RC57 SCAF97RC57	MS(H)100L2-4
12	1360	116.92	2.6		MS(H)100L2-4
13	1240	105.71	2.8		MS(H)100L2-4
16	1060	89.60*	3.1		MS(H)100L2-4

性能 / PERFORMANCE

SC..MS..性能参数/SC..MS..PERFORMANCE PARAMETER

输出转速 n2 1/min	输出扭矩 M2 Nm	传动比 I	服务系数 K	机座号 Frame Size	电机型号 Motor
3.0kW					
4.9	4290	286.4*	0.95	SC97 SCF97 SCA97 SCAF97	MS(H)100L2-4
5.3	3960	262.22	1.00		MS(H)100L2-4
6.0	3530	231.67	1.15		MS(H)100L2-4
7.1	3040	196.52	1.30		MS(H)100L2-4
7.7	2810	180.95	1.40		MS(H)100L2-4
8.7	2530	161.74	1.50		MS(H)100L2-4
9.6	2300	145.60*	1.65		MS(H)100L2-4
11	2090	131.85	1.75		MS(H)100L2-4
12	1870	116.92	1.90		MS(H)100L2-4
13	1700	105.71	2.0		MS(H)100L2-4
16	1450	89.60*	2.2		MS(H)100L2-4
17	1470	80.85	2.2		MS(H)100L2-4
7.8	2700	180.00*	0.80	SC87 SCF87 SCA87 SCAF87	MS(H)100L2-4
9.2	2300	151.30	0.95		MS(H)100L2-4
10	2130	139.05	1.00		MS(H)100L2-4
11	1900	123.48	1.10		MS(H)100L2-4
13	1720	110.40	1.15		MS(H)100L2-4
14	1550	99.26	1.25		MS(H)100L2-4
16	1360	86.15	1.40		MS(H)100L2-4
17	1460	81.76	1.10		MS(H)100L2-4
18	1230	77.14	1.50		MS(H)100L2-4
20	1260	70.43	1.25		MS(H)100L2-4
22	1160	64.27	1.40		MS(H)100L2-4
25	1030	57.00*	1.55		MS(H)100L2-4
29	870	47.91	1.85	SC77 SCF77 SCA77 SCAF77	MS(H)100L2-4
32	800	44.03	2.0		MS(H)100L2-4
36	715	39.10	2.2		MS(H)100L2-4
40	640	34.96*	2.5		MS(H)100L2-4
16	1290	85.22	0.85	SC77 SCF77 SCA77 SCAF77	MS(H)100L2-4
19	1150	75.20*	0.95		MS(H)100L2-4
21	1020	66.67	1.00		MS(H)100L2-4
22	1110	63.03	1.00		MS(H)100L2-4
25	880	56.92	1.10	SC77 SCF77 SCA77 SCAF77	MS(H)100L2-4
26	950	53.87	1.15		MS(H)100L2-4
28	880	49.38	1.25		MS(H)100L2-4
32	770	43.33	1.40		MS(H)100L2-4
34	735	41.07	1.50		MS(H)100L2-4
39	645	35.94	1.70		MS(H)100L2-4
43	585	32.38	1.85		MS(H)100L2-4
49	515	28.41	2.0		MS(H)100L2-4
56	455	25.07	2.2		MS(H)100L2-4
61	430	22.89	1.65		MS(H)100L2-4
67	395	20.99	1.80		MS(H)100L2-4
76	345	18.42	2.0		MS(H)100L2-4
80	330	17.45	2.2	SC67 SCF67 SCA67 SCAF67	MS(H)100L2-4
92	290	15.28	2.5		MS(H)100L2-4
102	260	13.76	2.7		MS(H)100L2-4
116	230	12.07	3.1		MS(H)100L2-4
131	205	10.65	3.6	SC67 SCF67 SCA67 SCAF67	MS(H)100L2-4
40	595	34.08*	0.80		MS(H)100L2-4
47	510	29.63	0.95		MS(H)100L2-4
52	465	26.93	1.05		MS(H)100L2-4
60	405	23.33	1.20		MS(H)100L2-4
69	375	20.37	0.90		MS(H)100L2-4
81	320	17.28*	1.05		MS(H)100L2-4
90	290	15.60*	1.15		MS(H)100L2-4
102	255	13.73*	1.35		MS(H)100L2-4
108	240	12.96*	1.40		MS(H)100L2-4
127	205	11.03	1.65		MS(H)100L2-4
140	188	10.03	1.80		MS(H)100L2-4
161	164	8.69	2.1	SC97RC57 SCF97RC57 SCA97RC57 SCAF97RC57	MS(H)100L2-4
185	143	7.56*	2.1		MS(H)100L2-4
130	199	10.80*	0.85	SC57 SCF57 SCA57 SCAF57	MS(H)100L2-4
152	171	9.23*	1.00		MS(H)100L2-4
162	160	8.64*	1.05		MS(H)100L2-4
192	136	7.28	1.10		MS(H)100L2-4
4.0kW					
6.5	4820	219	0.85	SC97RC57 SCF97RC57 SCA97RC57 SCAF97RC57	MS(H)112M-4
6.9	4530	205	0.95		MS(H)112M-4
6.1	4650	231.67	0.85	SC97 SCF97 SCA97 SCAF97	MS(H)112M-4
7.2	3990	196.52	1.00		MS(H)112M-4
7.9	3700	180.95	1.05		MS(H)112M-4
8.8	3330	161.74	1.15		MS(H)112M-4
9.8	3020	145.60*	1.25		MS(H)112M-4
11	2750	131.85	1.35		MS(H)112M-4
12	2460	116.92	1.45		MS(H)112M-4
13	2230	105.71	1.55		MS(H)112M-4
16	1910	89.60*	1.70		MS(H)112M-4
18	1940	80.85	1.65		MS(H)112M-4
20	1720	71.43	1.90		MS(H)112M-4
23	1470	60.59	2.3		MS(H)112M-4
25	1350	55.79	2.4	SC87 SCF87 SCA87 SCAF87	MS(H)112M-4
12	2510	123.48	0.80		MS(H)112M-4
13	2260	110.40*	0.90		MS(H)112M-4
14	2040	99.26	0.95		MS(H)112M-4
16	1790	86.15	1.05		MS(H)112M-4
18	1610	77.14	1.15		MS(H)112M-4
20	1660	70.43	0.95		MS(H)112M-4
22	1520	64.27	1.05		MS(H)112M-4
25	1350	57.00*	1.20		MS(H)112M-4
30	1150	47.91	1.40		MS(H)112M-4
32	1060	44.03	1.50		MS(H)112M-4
36	940	39.10	1.70		MS(H)112M-4
41	840	34.96*	1.90	SC77 SCF77 SCA77 SCAF77	MS(H)112M-4
45	760	31.43	2.1		MS(H)112M-4
52	665	27.28	2.4		MS(H)112M-4
56	635	25.50*	1.95		MS(H)112M-4
25	1160	56.92	0.85	SC77 SCF77 SCA77 SCAF77	MS(H)112M-4
26	1250	53.87	0.90		MS(H)112M-4
29	1150	49.38	0.95		MS(H)112M-4
33	1020	43.33	1.10		MS(H)112M-4
35	960	41.07	1.15	SC77 SCF77 SCA77 SCAF77	MS(H)112M-4
40	850	35.94	1.30		MS(H)112M-4
44	765	32.38	1.40		MS(H)112M-4
50	675	28.41	1.55		MS(H)112M-4
57	600	25.07	1.70		MS(H)112M-4
62	565	22.89	1.25		MS(H)112M-4
68	520	20.99	1.35		MS(H)112M-4
77	455	18.42	1.55		MS(H)112M-4
81	435	17.45	1.65		MS(H)112M-4
93	380	15.28	1.85		MS(H)112M-4
103	345	13.76	2.1		MS(H)112M-4
118	300	12.07	2.4		MS(H)112M-4
133	265	10.65	2.7	SC67 SCF67 SCA67 SCAF67	MS(H)112M-4
150	235	9.44	3.1		MS(H)112M-4
176	205	8.06	3.4		MS(H)112M-4
82	420	17.28*	0.80	SC67 SCF67 SCA67 SCAF67	MS(H)112M-4
91	380	15.60*	0.90		MS(H)112M-4
103	335	13.73*	1.00		MS(H)112M-4
110	320	12.96*	1.05		MS(H)112M-4
129	270	11.03	1.25	SC67 SCF67 SCA67 SCAF67	MS(H)112M-4
142	245	10.03	1.35		MS(H)112M-4
163	215	8.69	1.55		MS(H)112M-4
188	188	7.56*	1.55		MS(H)112M-4



性能 / PERFORMANCE

SC..MS..性能参数/SC..MS..PERFORMANCE PARAMETER

输出转速 n2 1/min	输出扭矩 M2 Nm	传动比 I	服务系数 K	机座号 Frame Size	电机型号 Motor
5.5kW					
8.8	4550	161.74	0.85	SC97 SCF97 SCA97 SCAF97	MS(H)132S-4 MS(H)132S-4 MS(H)132S-4 MS(H)132S-4
9.8	4130	145.60*	0.90		
11	3760	131.85	0.95		
12	3360	116.92	1.05		
14	3050	105.71	1.15		
16	2610	89.60*	1.25		
18	2290	78.26	1.35		
20	2350	71.43	1.40		
22	1930	65.45	1.50		
24	2000	60.59	1.65		
26	1850	55.79	1.80		
29	1660	49.87	2.0		
32	1500	44.89	2.2		
35	1360	40.65	2.4		
19	2200	77.14	0.85	SC87 SCF87 SCA87 SCAF87	MS(H)132S-4 MS(H)132S-4 MS(H)132S-4 MS(H)132S-4
22	1850	64.00*	0.90		
25	1850	57.00*	0.85		
30	1560	47.91	1.00		
32	1440	44.03	1.10	SC87 SCF87 SCA87 SCAF87	MS(H)132S-4 MS(H)132S-4 MS(H)132S-4 MS(H)132S-4
37	1280	39.10	1.25		
41	1150	34.96*	1.40		
45	1040	31.43	1.55		
52	910	27.28	1.75		
56	870	25.50*	1.45		
67	730	21.43	1.70		
73	675	19.70	1.85		
82	600	17.49	2.1		
91	535	15.64*	2.3		
102	485	14.06	2.6		
117	420	12.21	3.0		
131	375	10.93	3.3		
35	1320	41.07	0.85	SC77 SCF77 SCA77 SCAF77	MS(H)132S-4 MS(H)132S-4 MS(H)132S-4 MS(H)132S-4
40	1160	35.94	0.95		
44	1050	32.38	1.05		
50	920	28.41	1.15		
57	820	25.07	1.25	SC77 SCF77 SCA77 SCAF77	MS(H)132S-4 MS(H)132S-4 MS(H)132S-4 MS(H)132S-4
64	725	22.22	1.35		
78	625	18.42	1.15		
82	590	17.45	1.20		
94	520	15.28	1.35		
104	470	13.76	1.50		
118	410	12.07	1.75		
134	365	10.65	2.0		
151	325	9.44	2.2		
177	275	8.06	2.5		
130	370	11.03	0.90	SC67 SCF67 SCA67 SCAF67	MS(H)132S-4 MS(H)132S-4 MS(H)132S-4 MS(H)132S-4
143	340	10.03	1.00		
165	295	8.69	1.15		
189	255	7.56*	1.15		
7.5kW					
14	4160	105.71	0.85	SC97 SCF97 SCA97 SCAF97	MS(H)132M-4 MS(H)132M-4 MS(H)132M-4 MS(H)132M-4
16	3560	89.06*	0.90		
18	3130	78.26	1.00		
20	3200	71.43	1.05		
22	2630	65.45	1.10		
24	2730	60.59	1.20		
26	2520	55.79	1.30		
29	2260	49.87	1.45		
32	2040	44.89	1.60		
35	1850	40.65	1.80		
40	1650	36.05	2.0		
44	1490	32.60	2.2		
54	1240	26.39	2.1		
61	1110	23.59	2.3		
67	1000	21.23	2.6		
74	910	19.23	2.9		
32	1970	44.03	0.80	SC87 SCF87 SCA87 SCAF87	MS(H)132M-4 MS(H)132M-4 MS(H)132M-4 MS(H)132M-4
37	1750	39.10	0.90		
41	1570	34.96*	1.00		
45	1420	31.43	1.15		
52	1230	27.28	1.30	SC87 SCF87 SCA87 SCAF87	MS(H)132M-4 MS(H)132M-4 MS(H)132M-4 MS(H)132M-4
56	1180	25.50*	1.05		
67	1000	21.43	1.25		
73	920	19.70	1.35		
82	820	17.49	1.50		
91	730	15.64*	1.70		
102	660	14.06	1.90		
117	575	12.21	2.2		
131	515	10.93	2.4		
158	430	9.07	2.7		
181	375	7.88	2.7		
50	1260	28.41	0.85	SC77 SCF77 SCA77 SCAF77	MS(H)132M-4 MS(H)132M-4 MS(H)132M-4 MS(H)132M-4
57	1110	25.07	0.90		
64	990	22.22	1.00		
78	850	18.42	0.85		
82	810	17.45	0.90	SC77 SCF77 SCA77 SCAF77	MS(H)132M-4 MS(H)132M-4 MS(H)132M-4 MS(H)132M-4
94	705	15.28	1.00		
104	640	13.76	1.10		
118	560	12.07	1.30		
134	495	10.65	1.45		
151	440	9.44	1.65		
177	380	8.06	1.80		
11kW					
26	3670	55.79	0.90	SC97 SCF97 SCA97 SCAF97	MS(H)160M-4 MS(H)160M-4 MS(H)160M-4 MS(H)160M-4
29	3290	49.87	1.00		
32	2970	44.89	1.10		
35	2700	40.65	1.20		
40	2400	36.05	1.40		
44	2170	32.60	1.45		
55	1810	26.39	1.45		
61	1620	23.59	1.60		
68	1460	21.23	1.80		
75	1320	19.23	1.95		
84	1180	17.05	2.2		
93	1070	15.42	2.3		
110	900	13.07	2.6		
126	790	11.41	2.8		
53	1800	27.28	0.90	SC87 SCF87 SCA87 SCAF87	MS(H)160M-4 MS(H)160M-4 MS(H)160M-4
59	1610	24.43	1.00		
71	1340	20.27	1.20		

性能 / PERFORMANCE

SC..MS..性能参数/SC..MS..PERFORMANCE PARAMETER

输出转速 n2 1/min	输出扭矩 M2 Nm	传动比 I	服务系数 K	机座号 Frame Size	电机型号 Motor
11kW					
73	1340	19.70	0.95	SC87 SCF87 SCA87 SCAF87	MS(H)160M-4 MS(H)160M-4 MS(H)160M-4 MS(H)160M-4
82	1190	17.49	1.05		
92	1070	15.64*	1.15		
102	960	14.06	1.30		
118	840	12.21	1.50		
132	750	10.93	1.65		
159	625	9.07	1.85		
183	545	7.88	1.85		
15kW					
33	4000	44.89	0.85	SC97 SCF97 SCA97 SCAF97	MS(H)160L-4 MS(H)160L-4 MS(H)160L-4 MS(H)160L-4
36	3630	40.65	0.90		
41	3230	36.05	1.00		
45	2920	32.06	1.10		
55	2430	26.39	1.05	SC97 SCF97 SCA97 SCAF97	MS(H)160L-4 MS(H)160L-4 MS(H)160L-4 MS(H)160L-4
62	2180	23.59	1.20		
69	1970	21.23	1.30		
76	1780	19.23	1.45		
86	1580	17.05	1.60		
95	1430	15.42	1.70		
112	1220	13.07	1.90		
128	1060	11.41	2.1		
153	890	9.55	2.3		
177	775	8.26	2.3		
93	1430	15.64*	0.85	SC87 SCF87 SCA87 SCAF87	MS(H)160L-4 MS(H)160L-4 MS(H)160L-4 MS(H)160L-4
104	1290	14.06	0.95		
120	1120	12.21	1.10		

输出转速 n2 1/min	输出扭矩 M2 Nm	传动比 I	服务系数 K	机座号 Frame Size	电机型号 Motor
15kW					
134	1010	10.93	1.25	SC87 SCF87 SCA87 SCAF87	MS(H)160L-4 MS(H)160L-4 MS(H)160L-4 MS(H)160L-4
161	840	9.07	1.35		
185	730	7.88	1.40		
18.5kW					
41	3970	36.05	0.85	SC97 SCF97 SCA97 SCAF97	MS(H)180M-4 MS(H)180M-4 MS(H)180M-4 MS(H)180M-4
45	3590	32.60	0.90		
53	3060	27.63	1.00		
61	2680	24.13	1.05		
69	2420	21.23	1.10		
76	2190	19.23	1.20		
86	1950	17.05	1.30		
95	1760	15.42	1.40		
112	1500	13.07	1.55		
128	1310	11.41	1.70		
153	1100	9.55	1.85		
177	950	8.26	1.85		
22kW					
53	3630	27.63	0.85	SC97 SCF97 SCA97 SCAF97	MS(H)180L-4 MS(H)180L-4 MS(H)180L-4 MS(H)180L-4
61	3180	24.13	0.90		
69	2870	21.23	0.90		
76	2600	19.23	1.00		
86	2310	17.05	1.10		
95	2090	15.42	1.20	SC97 SCF97 SCA97 SCAF97	MS(H)180L-4 MS(H)180L-4 MS(H)180L-4 MS(H)180L-4
112	1780	13.07	1.30		
128	1560	11.41	1.40		
153	1300	9.55	1.55		
177	1130	8.26	1.55		



性能 / PERFORMANCE

SC..RC..MS..性能参数/SC..RC..MS..PERFORMANCE PARAMETER

输出转速 n2 1/min	传动比 I	许用径向力 Fr(N)	机座号 Frame Size	电机型号 Motor	输出转速 n2 1/min	传动比 I	许用径向力 Fr(N)	机座号 Frame Size	电机型号 Motor												
92Nm					185Nm																
0.14	10037	3000	SC37RC17 SCF37RC17 SCA37RC17 SCAF37RC17	MS(H)6314 MS(H)6314 MS(H)6314 MS(H)6314	1.4	965	5200	SC47RC17 SCF47RC17 SCA47RC17 SCAF47RC17	MS(H)6314 MS(H)6314 MS(H)6314 MS(H)6314												
0.16	8654	3000			1.6	865	5200														
0.17	8066	3000			1.8	750	5200														
0.20	7051	3000			2.1	655	5200														
0.23	6079	3000			2.4	574	5200														
0.25	5431	3000			2.7	506	5200														
0.29	4747	3000			3.1	438	5200														
0.33	4155	3000			3.4 388 5200 3.9 336 5200 4.5 294 5200	SC47RC17 SCF47RC17 SCA47RC17 SCAF47RC17	MS(H)6324 MS(H)6324 MS(H)6324 MS(H)6324														
0.38	3632	3000																			
0.48	2866	3000																			
0.56	2471	3000																			
0.64	2160	3000																			
0.73	1887	3000																			
0.83	1665	3000																			
0.95	1456	3000			5.0 257 5200 5.7 229 5200 6.5 200 5200 6.9 187 5200 7.9 165 5200	SC47RC17 SCF47RC17 SCA47RC17 SCAF47RC17	MS(H)7114 MS(H)7114 MS(H)7114 MS(H)7114														
1.10	1271	3000																			
1.20	1121	3000																			
1.40	994	3000																			
1.60	869	3000																			
1.8 774 3000 2.1 666 3000 2.3 596 3000 2.6 521 3000 3.0 456 3000 3.5 398 3000 3.9 351 3000 4.6 303 3000 5.2 265 3000 6.0 232 3000 6.8 202 3000	SC37RC17 SCF37RC17 SCA37RC17 SCAF37RC17	MS(H)6314 MS(H)6314 MS(H)6314 MS(H)6314	9.3 148 5200 11 131 5200	SC47RC17 SCF47RC17 SCA47RC17 SCAF47RC17				MS(H)7124 MS(H)7124 MS(H)7124 MS(H)7124													
									7.4 179 3000 8.3 158 3000 9.1 144 3000 11 118 3000	SC37RC17 SCF37RC17 SCA37RC17 SCAF37RC17	MS(H)6324 MS(H)6324 MS(H)6324 MS(H)6324	330Nm	0.11 12909 6800 0.12 11189 6800 0.13 10374 6800 0.15 8992 6800 0.18 7860 6800 0.20 6887 6800 0.23 6055 6800 0.26 5292 6800 0.30 4637 6800 0.34 4092 6800 0.38 3628 6800	SC57RC17 SCF57RC17 SCA57RC17 SCAF57RC17	MS(H)6314 MS(H)6314 MS(H)6314 MS(H)6314						
					12 110 3000	SC37RC17 SCF37RC17 SCA37RC17 SCAF37RC17	MS(H)7114 MS(H)7114 MS(H)7114 MS(H)7114									300Nm					
																	185Nm				
																	0.11 12909 5250 0.12 11189 5250 0.13 10374 5250 0.15 8992 5250 0.18 7860 5250 0.20 6887 5250 0.23 6055 5250 0.26 5292 5250 0.30 4637 5250 0.34 4092 5250 0.39 3582 5250 0.44 3131 5200 0.51 2714 5200 0.57 2412 5200 0.65 2131 5200 0.74 1863 5200 0.83 1663 5200 0.96 1435 5200 1.1 1254 5200 1.2 1120 5200 1.3 1083 5200	SC47RC17 SCF47RC17 SCA47RC17 SCAF47RC17	MS(H)6314 MS(H)6314 MS(H)6314 MS(H)6314	300Nm	0.44 3131 7090 0.51 2714 7090 0.57 2412 7090 0.65 2131 7090 0.74 1863 7090 0.83 1663 7090 0.96 1435 7090 1.10 1254 7090 1.30 1083 7090
									1.4 965 7090 1.6 865 7090 1.8 750 7090 2.1 655 7090	SC57RC17 SCF57RC17 SCA57RC17 SCAF57RC17	MS(H)6314 MS(H)6314 MS(H)6314 MS(H)6314										

性能 / PERFORMANCE

SC..RC..MS..性能参数/SC..RC..MS..PERFORMANCE PARAMETER

输出转速 n2 1/min	传动比 i	许用径向力 Fr(N)	机座号 Frame Size	电机型号 Motor	许用径向力 Fr(N)						
300Nm					570Nm						
2.3	574	7090	SC57RC17 SCF57RC17 SCA57RC17 SCAF57RC17	MS(H)6324 MS(H)6324 MS(H)6324 MS(H)6324	0.06	21362	8190	SC67RC37 SCF67RC37 SCA67RC37 SCAF67RC37	MS(H)6314 MS(H)6314 MS(H)6314 MS(H)6314		
2.6	506	7090			0.07	19594	8190				
3.0	438	7090			0.08	18120	8190				
3.4	388	7090			0.08	16682	8190				
					0.10	14383	8190				
					0.11	12774	8190				
					0.13	11013	8190				
					0.14	9694	8190				
					0.16	8529	8190				
					0.19	7455	8190				
					0.21	6531	8190				
					0.24	5759	8190				
					0.28	4965	8190				
					0.31	4410	8190				
					0.36	3880	8190				
					0.40	3432	8190				
					0.47	2944	8190				
					0.52	2630	8190				
					0.61	2279	8190				
					0.69	2014	8190				
					0.78	1772	8190				
					0.88	1559	8190				
					1.00	1363	8190				
					1.20	1194	8190				
					1.3	1045	8190				
					1.4	914	8190				



性能 / PERFORMANCE

SC..RC..MS..性能参数/SC..RC..MS..PERFORMANCE PARAMETER

输出转速 n2 1/min	传动比 I	许用径向力 Fr(N)	机座号 Frame Size	电机型号 Motor
570Nm				
2.9	469	8190	SC67RC37	MS(H)7124
3.3	424	8190	SCF67RC37	MS(H)7124
3.8	365	8190	SCA67RC37	MS(H)7124
			SCAF67RC37	MS(H)7124
4.3	319	8190	SC67RC37	MS(H)8014
4.9	281	8190	SCF67RC37	MS(H)8014
5.5	246	8190	SCA67RC37	MS(H)8014
6.2	221	8190	SCAF67RC37	MS(H)8014
7.0	198	8190	SC67RC37	MS(H)8024
			SCF67RC37	MS(H)8024
			SCA67RC37	MS(H)8024
			SCAF67RC37	MS(H)8024
1270Nm				
0.05	25493	11700	SC77RC37 SCF77RC37 SCA77RC37 SCAF77RC37	MS(H)6314
0.06	21787	11700		
0.07	19907	11700		
0.08	17013	11700		
0.09	14668	11700		
0.11	13110	11700		
0.12	11569	11700		
0.14	9887	11700		
0.16	8817	11700		
0.18	7735	11700		
0.20	6735	11700		
0.23	5943	11700		
0.26	5214	11700		
0.30	4618	11700		
0.35	3992	11700		
0.39	3540	11700		
0.43	3098	11700	SC77RC37	MS(H)6324
			SCF77RC37	MS(H)6324
			SCA77RC37	MS(H)6324
			SCAF77RC37	MS(H)6324
1240Nm				
0.50	2753	12000	SC77RC37	MS(H)6314
0.58	2374	12000	SCF77RC37	MS(H)6314
			SCA77RC37	MS(H)6314
			SCAF77RC37	MS(H)6314
0.63	2083	12000	SC77RC37	MS(H)6324
0.73	1813	12000	SCF77RC37	MS(H)6324
0.76	1745	12000	SCA77RC37	MS(H)6324
0.82	1600	12000	SCAF77RC37	MS(H)6324
0.93	1404	12000	SC77RC37	MS(H)7114
1.0	1245	12000	SCF77RC37	MS(H)7114
			SCA77RC37	MS(H)7114
			SCAF77RC37	MS(H)7114
1.2	1100	12000	SC77RC37	MS(H)7114
			SCF77RC37	MS(H)7114
			SCA77RC37	MS(H)7114
			SCAF77RC37	MS(H)7114

性能 / PERFORMANCE

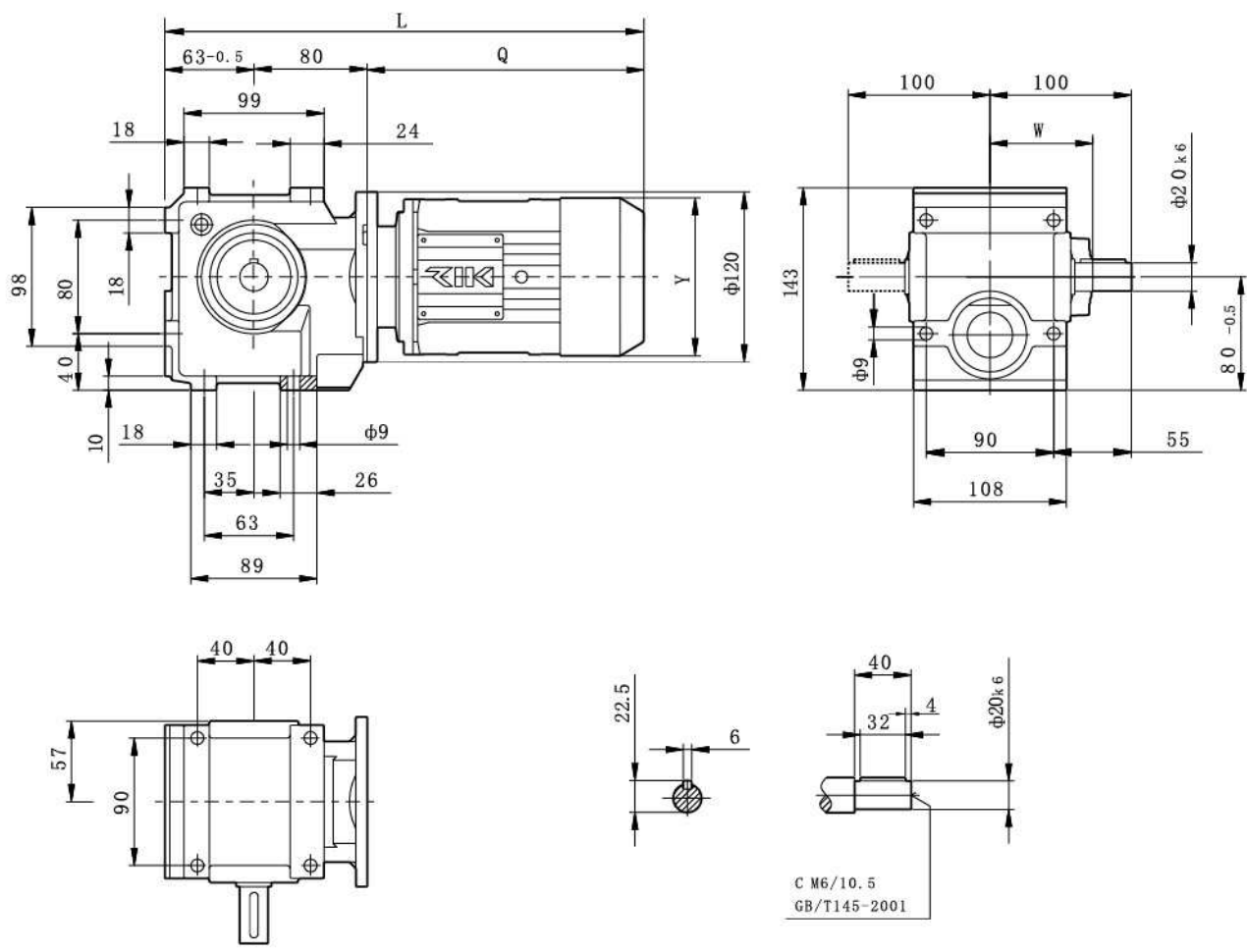
SC..RC..MS..性能参数/SC..RC..MS..PERFORMANCE PARAMETER

输出转速 n2 1/min	传动比 I	许用径向力 Fr(N)	机座号 Frame Size	电机型号 Motor
2500Nm				
0.75	1824	27500	SC87RC57	MS(H)8014
0.83	1631	27500	SCF87RC57	MS(H)8014
1.00	1332	27500	SCA87RC57	MS(H)8014
1.1	1191	27500	SCAF87RC57	MS(H)8014
1.3	1032	27500	SC87RC57	MS(H)8024
1.5	930	27500	SCF87RC57	MS(H)8024
1.7	831	27500	SCA87RC57	MS(H)8024
			SCAF87RC57	MS(H)8024
1.9	719	27500	SC87RC57	MS(H)90S-4
2.2	624	27500	SCF87RC57	MS(H)90S-4
2.5	558	27500	SCA87RC57	MS(H)90S-4
			SCAF87RC57	MS(H)90S-4
2.9	485	27500	SC87RC57	MS(H)90L-4
			SCF87RC57	MS(H)90L-4
			SCA87RC57	MS(H)90L-4
			SCAF87RC57	MS(H)90L-4
2450Nm				
3.2	435	27600	SC87RC57	MS(H)90L-4
3.7	378	27600	SCF87RC57	MS(H)90L-4
			SCA87RC57	MS(H)90L-4
			SCAF87RC57	MS(H)90L-4
2400Nm				
4.4	323	27700	SC87RC57	MS(H)100L1-4
5.0	281	27700	SCF87RC57	MS(H)100L1-4
			SCA87RC57	MS(H)100L1-4
			SCAF87RC57	MS(H)100L1-4
4200Nm				
0.04	33818	32800	SC97RC57 SCF97RC57 SCA97RC57 SCAF97RC57	MS(H)6314
0.04	31154	32800		
0.05	27847	32800		
0.06	24641	32800		
0.06	21537	32800		
0.07	18749	32800		
0.09	16233	32800		
0.09	14576	32800		
0.11	12752	32800		
0.12	11267	32800		
0.14	10078	32800		
0.15	8608	32800		
0.17	7554	32800		
0.20	6640	31300		
0.23	5780	31300		
0.27	4937	31300		
0.15	8608	32800	SC97RC57	MS(H)6324
0.17	7554	32800	SCF97RC57	MS(H)6324
0.20	6640	31300	SCA97RC57	MS(H)6324
0.23	5780	31300	SCAF97RC57	MS(H)6324
0.27	4937	31300	SC97RC57	MS(H)6324
			SCF97RC57	MS(H)6324
			SCA97RC57	MS(H)6324
			SCAF97RC57	MS(H)6324



尺寸 / DIMENSIONS

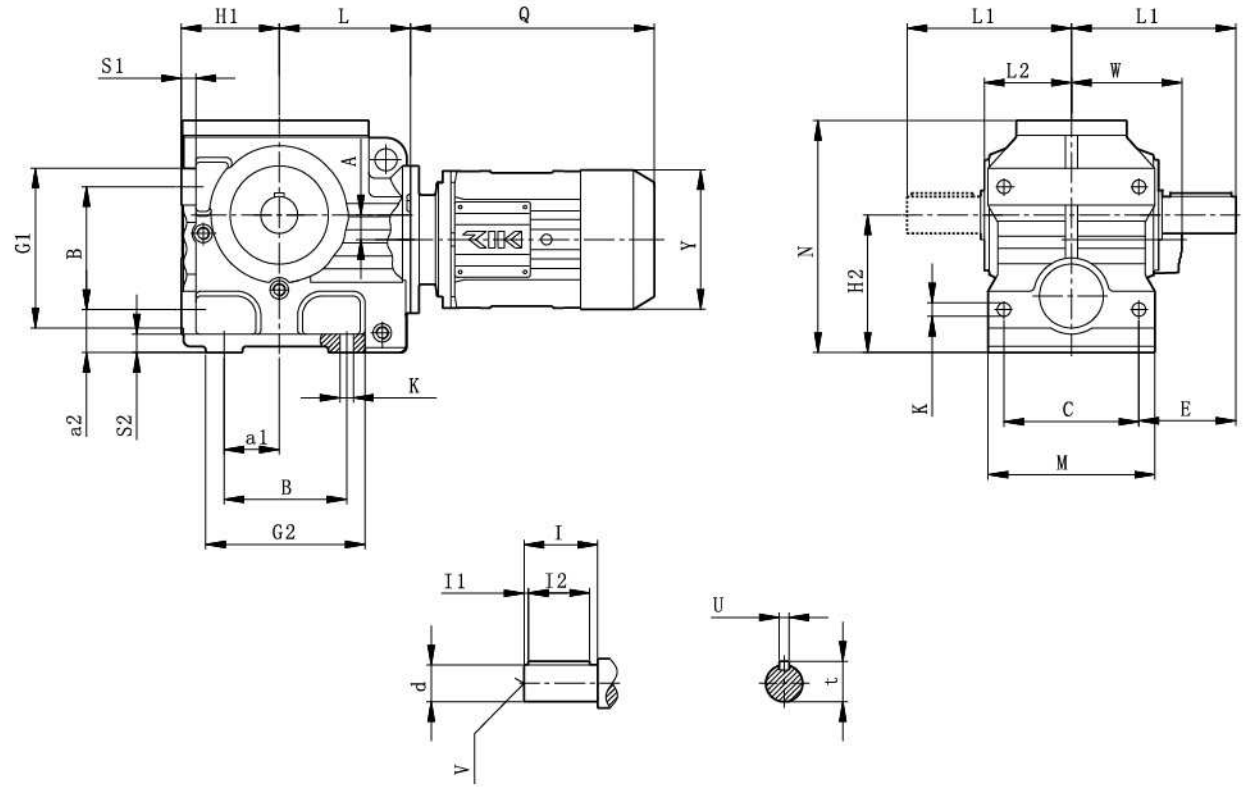
SC37..安装结构尺寸/SC37..MOUNTING DIMENSIONS



Q、Y、W尺寸详见P191页电机尺寸表  
Pls refer to page 191 for the size of q&y&w

尺寸 / DIMENSIONS

SC47..~SC97..安装结构尺寸/SC47..~SC97..MOUNTING DIMENSIONS



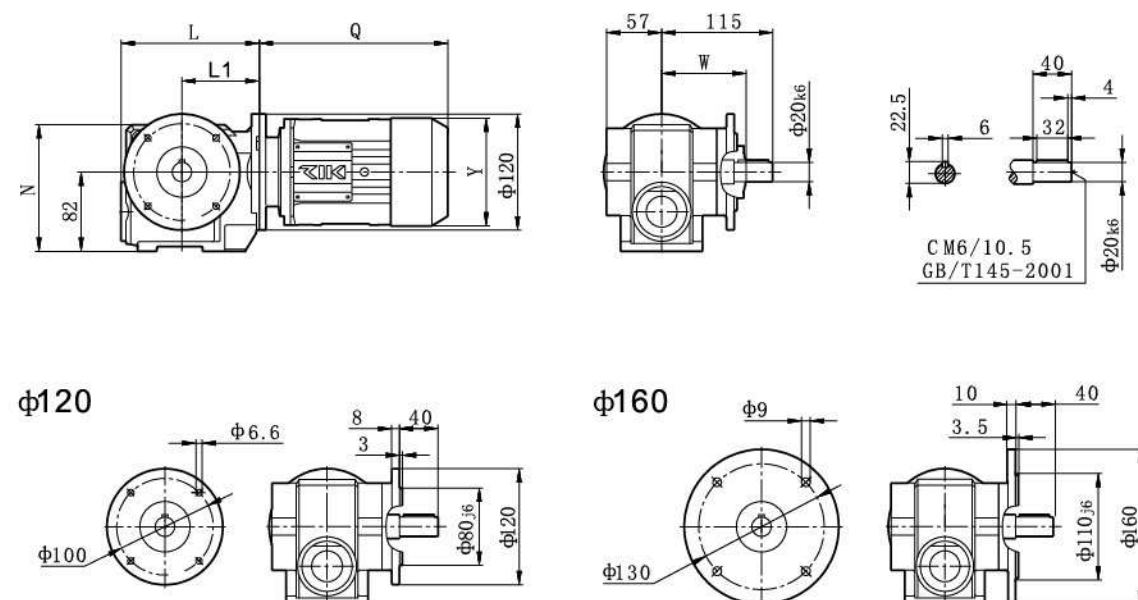
Q、Y、W尺寸详见P191页电机尺寸表  
Pls refer to page 191 for the size of q&y&w

型号 Size	A	a1 a2	B C	E	G1 G2	H1 H2	K	L	L1 L2	M N	S1 S2	轴伸尺寸/size of output shaft					
												d	l	l1 l2	u	t	v
SC47	8	35 35	80 100	65	105 112	75 100	11	96	115 60	120 155	12 15	25 k6	50	5 40	8	28	10
SC57	20	45 35	100 110	79	130 130	80 112	11	107	134 71	136 189	12 15	30 k6	60	3.5 50	8	33	10
SC67	20	60 40	130 130	95	170 175	106 140	13.5	135	160 85.5	160 236	15 20	35 k6	70	7 56	10	38	12
SC77	34	75 70	135 150	120	177 204	125 180	17.5	162	195 101	185 301	25 25	45 k6	90	5 80	14	48.5	16
SC87	37.5	92 82	180 200	155	230 247	150 225	22	190	255 130	250 368	30 30	60 m6	120	5 110	18	64	20
SC97	52	115 90	235 250	170	295 320	180 280	26	240	295 150	300 455	35 35	70 m6	140	7.5 125	20	74.5	20

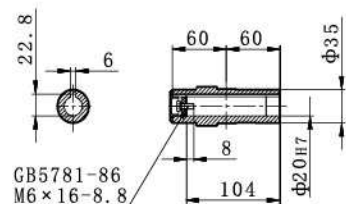
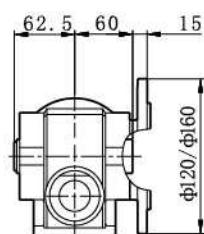
## 尺寸 / DIMENSIONS

### SCF37..安装结构尺寸/SC37..MOUNTING DIMENSIONS

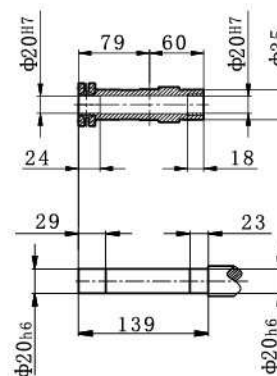
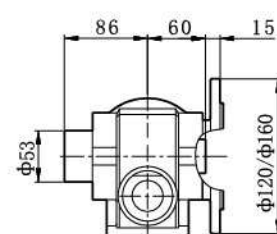
SCF37..



SCAF37..



SCHF37..

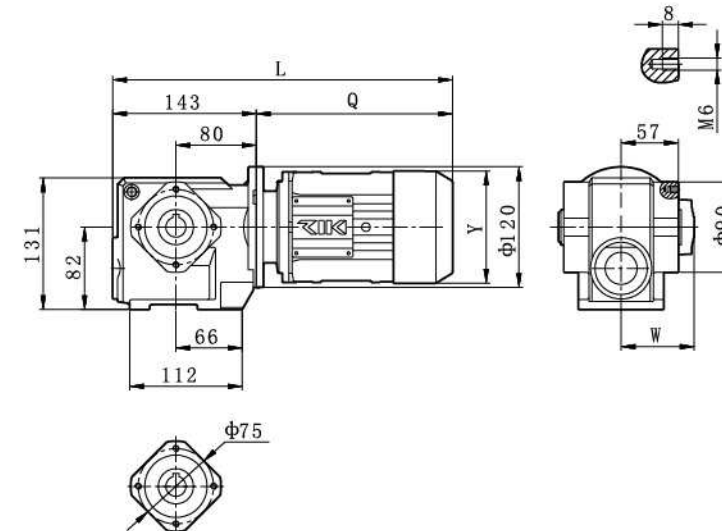


Q、Y、W尺寸详见P191页电机尺寸表  
Pls refer to page 191 for the size of q&y&w

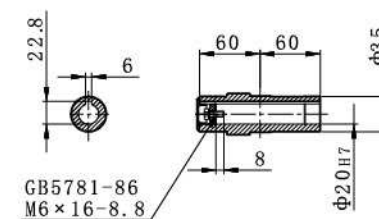
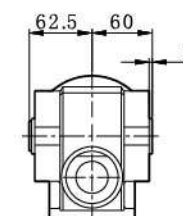
## 尺寸 / DIMENSIONS

### SCA37..安装结构尺寸/SCA37..MOUNTING DIMENSIONS

SCA37..

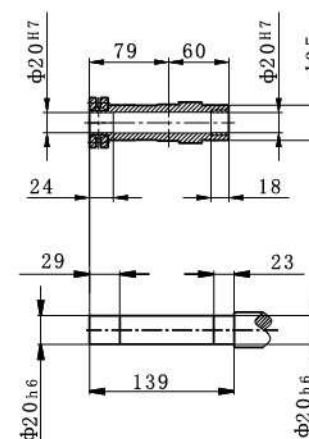
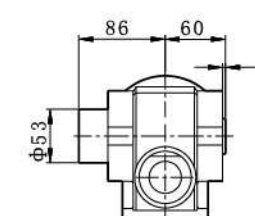


SCA37..

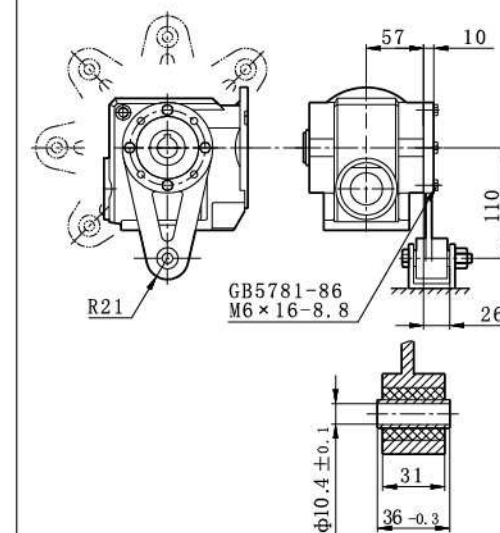


Q、Y、W尺寸详见P191页电机尺寸表  
Pls refer to page 191 for the size of q&y&w

SCH37..



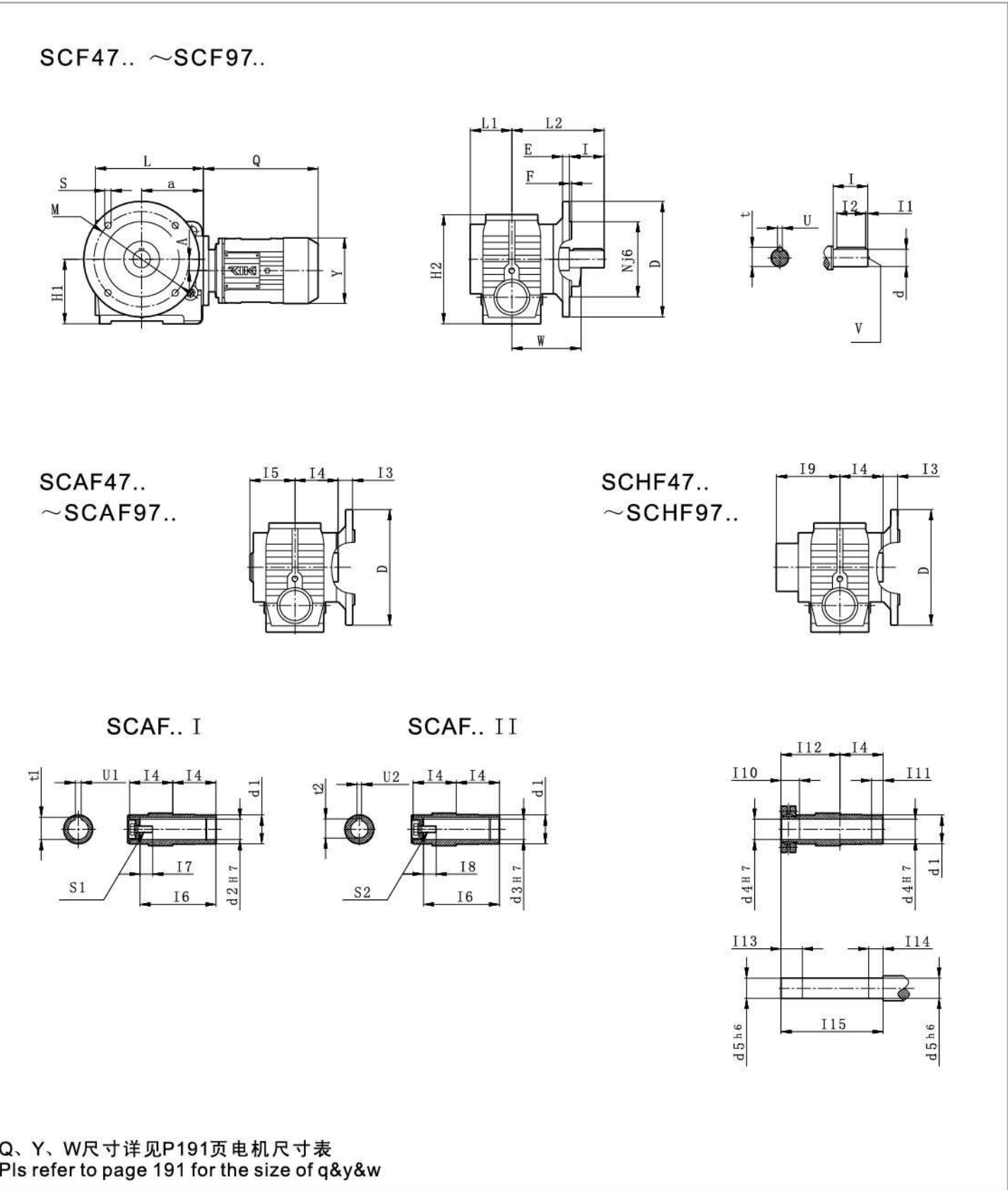
SC..37/T..





尺寸 / DIMENSIONS

SCF47..~97../SCAF47..~97../SCHF47..~97..安装结构尺寸



尺寸 / DIMENSIONS

SCF47..~97../SCAF47..~97../SCHF47..~97..MOUNTING DIMENSIONS

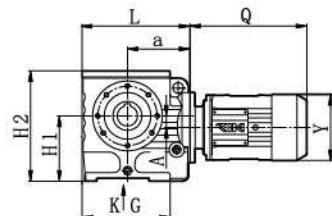
型 号 Size	A	a	D	E F	H1 H2	L	L1 L2	M N	S				
SCF47	8	96	160	10 3.5	100 179	171	57.5 134	130 110	4-φ 9				
SCF57	20	107	200	12 3.5	112 189	187	72 160	165 130	4-φ 11				
SCF67	22	135	200	12 3.5	140 236	242	80.5 190	165 130	4-φ 11				
SCF77	34	162	250	15 4	180 301	287	121 232	215 180	4-φ 13.5				
SCF87	37.5	190	350	18 5	225 368	340	145 290	300 250	4-φ 17.5				
SCF97	52	240	450	22 5	280 455	420	165 340	400 350	8-φ 17.5				
型 号 Size	轴 伸 尺 寸/size of output shaft												
	SCF..			SCAF..I				SCAF..II		SCHF..			
	d I	I1 I2	t U V	d1 d2	I3 I4 I5	I6 I7	t1 U1 S1	d3 I8	t2 U2 S2	d4 d5	I9	I10 I11 I12	I13 I14 I15
47	25k6 50	5 40	28 8 10	45 30	24 60 63	105 17	33.3 8 M10*25	25 17	28.3 8 M10*25	30 30	95	31 20 86	36 25 146
57	30k6 60	3.5 50	33 8 10	50 35	25 75 78	132 22	38.3 10 M12*30	30 17	33.3 8 M10*25	35 35	110	32 20 102	37 25 177
67	35k6 70	7 56	38 10 12	65 45	42.5 84 87	144 29	48.8 14 M16*40	40 29	43.3 12 M16*40	40 40	120	38 20 112	43 25 196
77	45k6 90	5 80	48.5 14 16	80 60	45.5 105 108	180 37	64.4 18 M20*50	50 32	53.8 14 M16*46	50 50	146	36 30 136	41 35 241
87	60m 6 120	5 110	64 18 20	95 70	52.5 125 128	220 34	74.9 20 M20*50	60 36	64.4 18 M20*50	65 65	176	40 40 165	45 45 290
97	70m 6 140	7.5 125	74.5 20 20	120 90	60 145 149	255 41	95.4 25 M24*60	70 34	74.9 20 M20*50	75 75	204	55 50 190	60 55 335



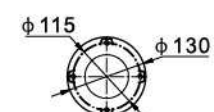
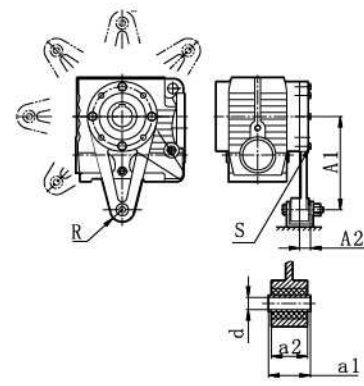
尺寸 / DIMENSIONS

SCA47..~97../SCH47..~97..安装结构尺寸

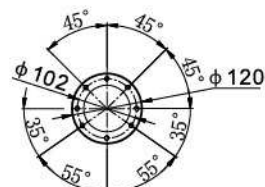
SCA47..~ SCA97..



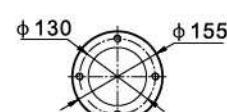
SC..47~97/T..



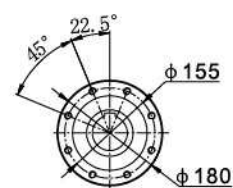
SCA47



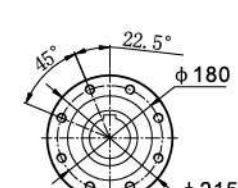
SCA57



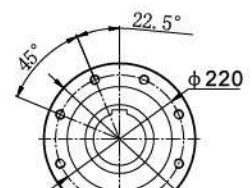
SCA67



SCA77

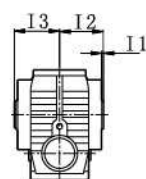


SCA87



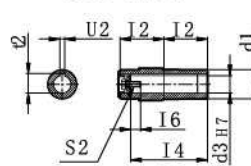
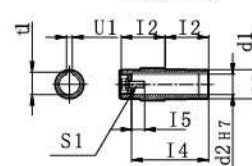
SCA97

SCA47..  
~ SCA97..

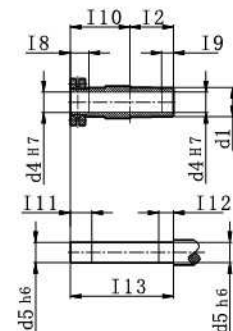
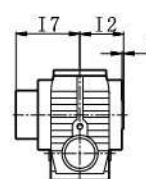


SCA..I

SCA..II



SCH47..  
~ SCH97..



Q、Y、W尺寸详见P191页电机尺寸表  
Pls refer to page 191 for the size of q&y&w

尺寸 / DIMENSIONS

SCA47..~97../SCH47..~97..MOUNTING DIMENSIONS

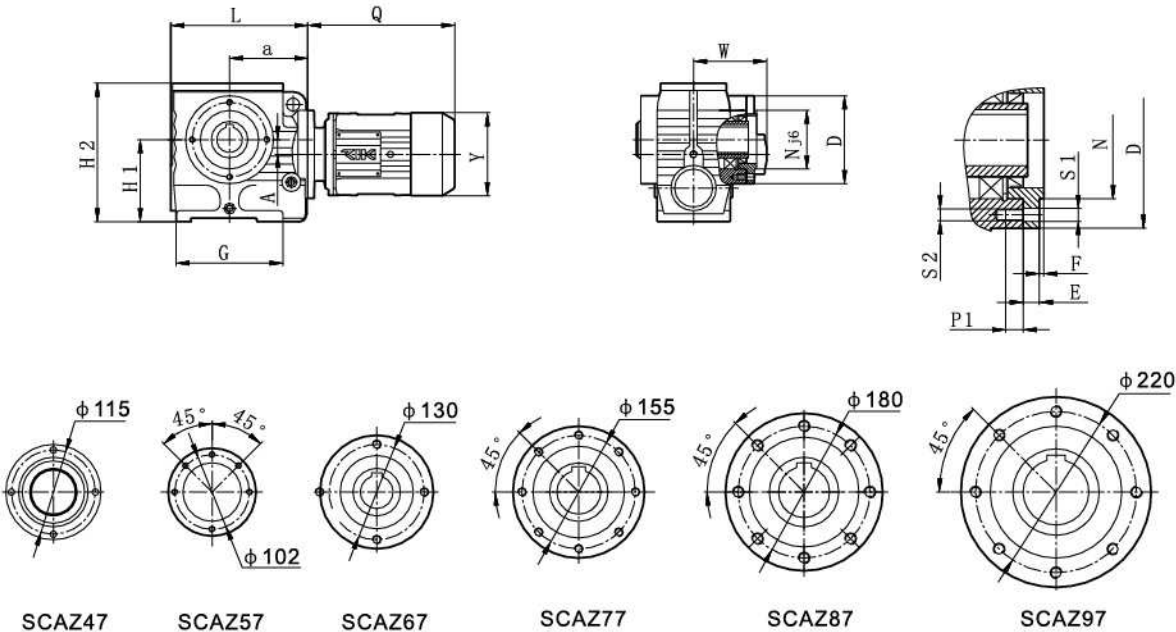
型号 Size	A	a	B1 B2	C	E G	H1 H2	L	P1 P2	S1 S2	扭力臂尺寸/size of torque arm			
										A1 A2	a1 a2	d	R S
SCA47	8	96	35 52	60	94 127	100 179	171	12 20	M8 M10	130 20.5	36-0.3 31	10.4	21 M8*25
SCA57	20	107	58.5 58.5	60	100 146	112 189	187	12 20	M8 M10	160 18.5	36-0.3 31	10.4	21 M8*25
SCA67	22	135	71.5 80.5	88	128 182	140 236	242	20 25	M12 M12	200 19.5	36-0.3 31	10.4	21 M12*35
SCA77	34	162	85 85	102	154 204	180 301	287	20 32	M12 M16	250 32.5	60-0.3 54	16.4	30 M12*35
SCA87	37.5	190	115 110	118	194 260	225 368	340	26 32	M16 M16	310 25.5	60-0.3 54	16.4	30 M16*45
SCA97	52	240	135 113	160	236 301	280 455	420	26 32	M16 M20	380 33	80-0.3 72	25	40 M16*50
型号 Size	轴伸尺寸/size of output shaft												
	SCA..I				SCA..II			SCH..					
	d1 d2	I1 I2 I3	I4 I5	t1 U1 S1	d3 I6	t2 U2 S2	d4 d5	I7	I8 I9 I10	I11 I12 I13			
47	45 30	2.5 60 63	105 17	33.3 8 M10*25	25 17	28.3 8 M10*25	30 30	95	31 20 86	36 25 146			
57	50 35	3 75 78	132 22	38.3 10 M12*30	30 17	33.3 8 M10*25	35 35	110	32 20 102	37 25 177			
67	65 45	3.5 84 87	144 29	48.8 14 M16*40	40 29	43.3 12 M16*40	40 40	120	38 20 112	43 25 196			
77	80 60	4 105 108	180 37	64.4 18 M20*50	50 32	53.8 14 M16*45	50 50	146	36 30 136	41 35 241			
87	95 70	5 125 128	220 34	74.9 20 M20*50	60 36	64.4 18 M20*50	65 65	176	40 40 165	45 45 290			
97	120 90	5 145 149	255 41	95.4 25 M24*60	70 34	74.9 20 M20*50	75 75	204	55 50 190	60 55 335			



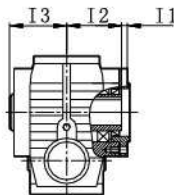
尺寸 / DIMENSIONS

SCAZ47..~97../SCHZ47..~97..安装结构尺寸

SCAZ47..~SCAZ97..

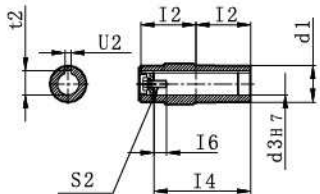
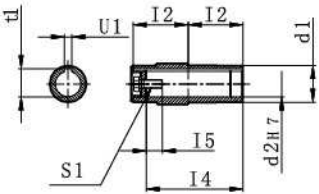


SCAZ47..~SCAZ97..

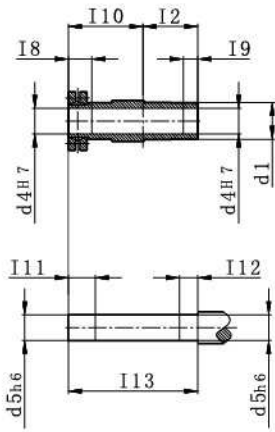
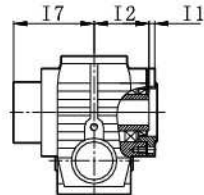


SCAZ..I

SCAZ..II



SCHZ47..~SCHZ97..



Q、Y、W尺寸详见P191页电机尺寸表  
Pls refer to page 191 for the size of q&y&w

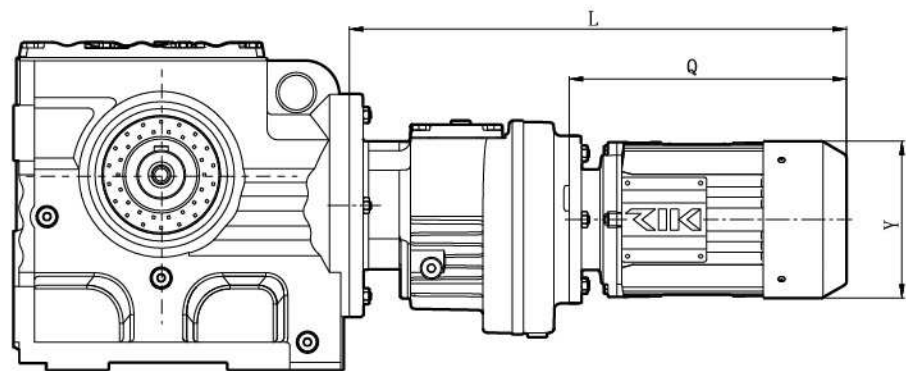
尺寸 / DIMENSIONS

SCAZ47..~97../SCHZ47..~97..MOUNTING DIMENSIONS

型 号 Size	A	a	D	E F	H1 H2	L	N	P1	S1 S2	
SCAZ47	8	96	130	11 3	100 179	171	95	12	φ9 M8	
SCAZ57	20	107	120	11 3	112 189	187	80	12	φ9 M8	
SCAZ67	22	135	155	13 3.5	140 236	242	105	20	φ13.5 M12	
SCAZ77	34	162	180	18.5 4	180 301	287	125	18.5	— M12	
SCAZ87	37.5	190	215	23.5 5	225 368	340	150	23.5	— M16	
SCAZ97	52	240	260	23.5 5	280 455	420	180	23.5	— M16	
型 号 Size	轴 伸 尺 寸/size of output shaft									
	SCAZ...I				SCAZ...II		SCHZ...			
	d1 d2	I1 I2 I3	I4 I5	t1 U1 S1	d3 I6	t2 U2 S2	d4 d5	I7	I8 I9 I10	I11 I12 I13
47	45 30	8.5 60 63	105 17	33.3 8 M10*25	25 17	28.3 8 M10*25	30 30	95	31 20 86	36 25 146
57	50 35	8 75 78	132 22	38.3 10 M12*30	30 17	33.3 8 M10*25	35 35	110	32 20 102	37 25 177
67	65 45	9.5 84 87	144 29	48.8 14 M16*40	40 29	43.3 12 M16*40	40 40	120	38 20 112	43 25 196
77	80 60	14.5 105 108	180 37	64.4 18 M20*50	50 32	53.8 14 M16*46	50 50	146	36 30 136	41 35 241
87	95 70	18.5 125 128	220 34	74.9 20 M20*50	60 36	64.4 18 M20*50	65 65	176	40 40 165	45 45 290
97	120 90	18.5 145 149	255 41	95.4 25 M24*60	70 34	74.9 20 M20*50	75 75	204	55 50 190	60 55 335



SC..RC..安装结构尺寸/SC..RC..MOUNTING DIMENSIONS



		Y	Q	L
SC..37RC17	MS(H)-63..	122	214	353
	MS(H)-71..	137	231	370
	MS(H)-80..	156	253	392
SC..47RC17 SC..57RC17	MS(H)-63..	122	214	353
	MS(H)-71..	137	231	370
	MS(H)-80..	156	253	392
SC..67RC17	MS(H)-63..	122	214	371
	MS(H)-71..	137	231	388
	MS(H)-80..	156	253	410
	MS(H)-90..	169	305	462
SC..77RC17	MS(H)-63..	122	214	371
	MS(H)-71..	137	231	388
	MS(H)-80..	156	253	410
	MS(H)-90..	169	305	462
SC..87RC17	MS(H)-63..	122	208	395
	MS(H)-71..	137	225	412
	MS(H)-80..	156	250	437
	MS(H)-90..	169	301	488
	MS(H)-100..	194	349	536
SC..97RC17	MS(H)-63..	122	208	395
	MS(H)-71..	137	225	412
	MS(H)-80..	156	250	437
	MS(H)-90..	169	301	488
	MS(H)-100..	194	349	536
	MS(H)-112..	226	350	537