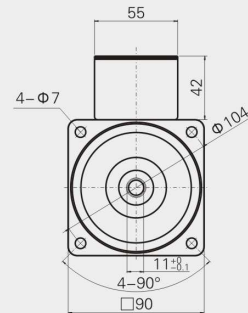
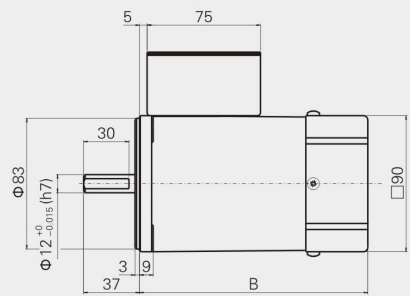


外形尺寸 (CAD) DIMENSIONS

90/120YS/YR/YT/YB/YF01

圓軸電箱 質量: 3kg

Round-axis motor, mass: 3kg

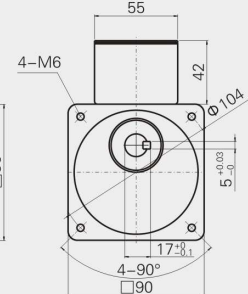
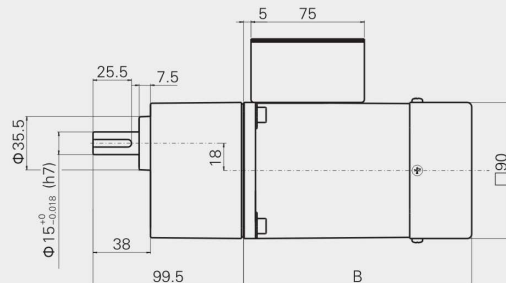


序號 No.	電機類型 Motor type	B
1	YS/YR	140
2	YT	151
3	YB	175
4	YF	187

90/120YS/YR/YT/YB/YF02

組合: 電機+標準減速箱 (減速比: 1:3~200) 質量: 4.2kg

Portfolio: motor + standard reducer (reduction ratio: 1:3~200) mass: 4.2kg

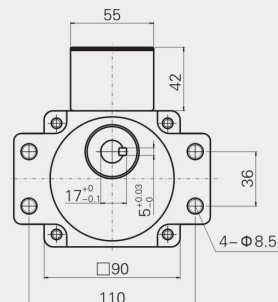
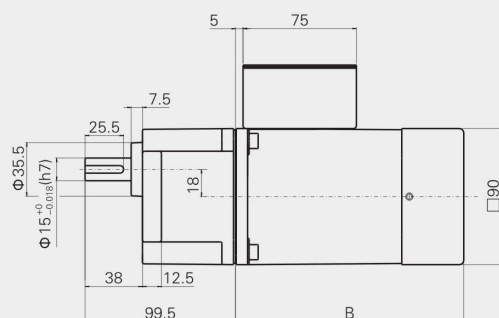


序號 No.	電機類型 Motor type	B
1	YS/YR	140
2	YT	151
3	YB	175
4	YF	187

90/120YS/YR/YT/YB/YF03

組合: 電機+帶耳減速箱 (減速比: 1:3~200) 質量: 4.2kg

Portfolio: motor + eared gear (reduction ratio: 1:3~200) mass: 4.2kg

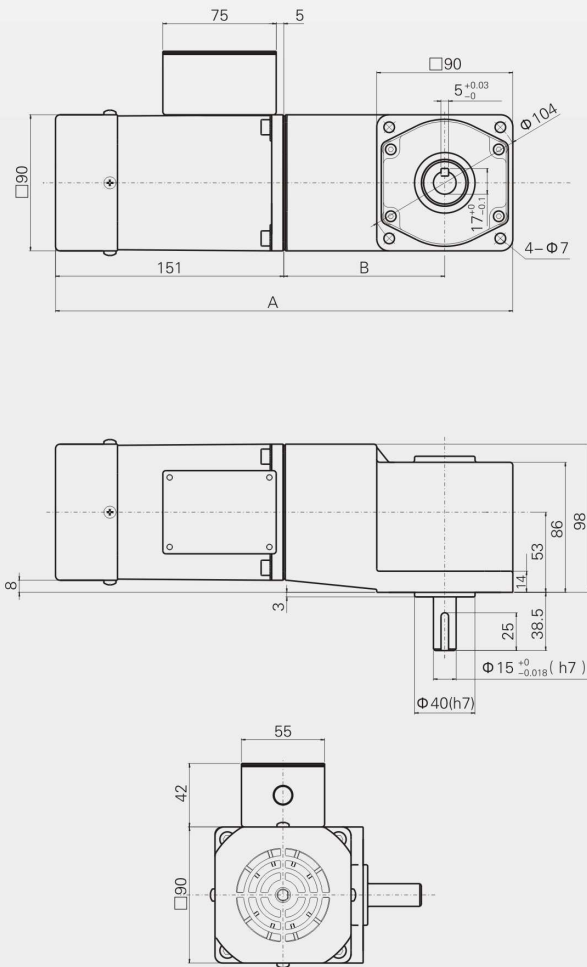


序號 No.	電機類型 Motor type	B
1	YS/YR	140
2	YT	151
3	YB	175
4	YF	187

90/120YS/YR/YT/YB/YF04

組合：電機+直角中實減速箱
 減速比：1:3~200
 質量：2kg

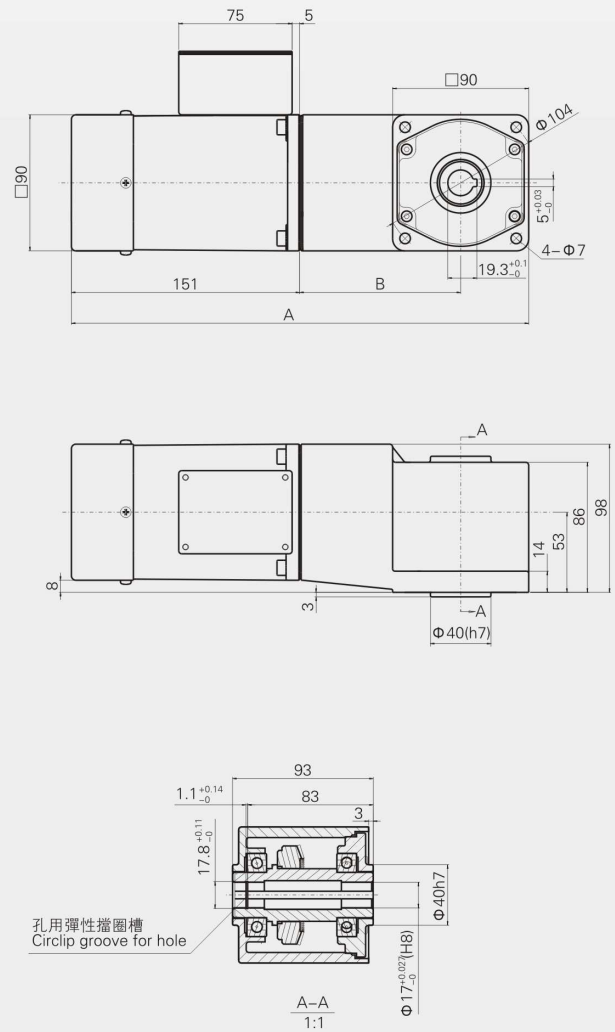
Portfolio: motor + right-angle solid gearbox
 Reduction ratio: 1:3~200
 Mass: 2kg



90/120YS/YR/YT/YB/YF05

組合：電機+直角中實減速箱
 減速比：1:3~200
 質量：2kg

Portfolio: motor + right angle hollow gearbox
 Reduction ratio: 1:3~200
 Mass: 2kg



序號 No.	電機類型 Motor type	A	B
1	YS/YR	291.5	140
2	YT	302.5	151
3	YB	326.5	175
4	YF	338.5	187