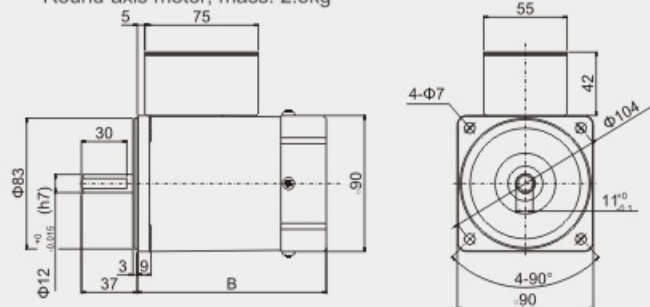


(CAD)DIMENSIONS

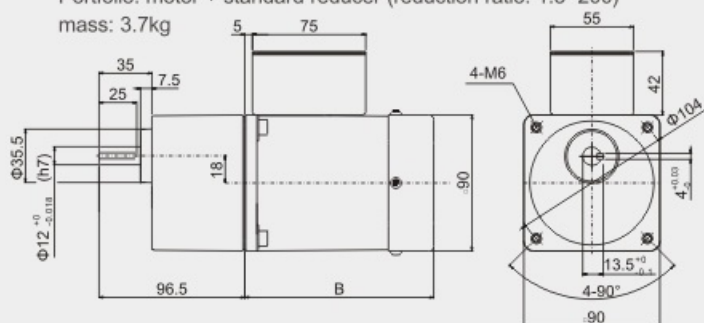
40/60YS/YR/YT/YB/YF01

Round-axis motor, mass: 2.5kg



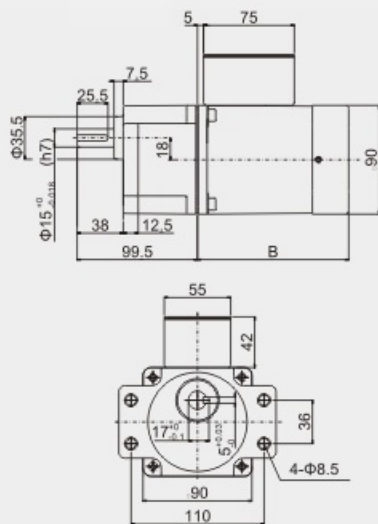
40/60YS/YR/YT/YB/YF02

Portfolio: motor + standard reducer (reduction ratio: 1:3~200)
mass: 3.7kg



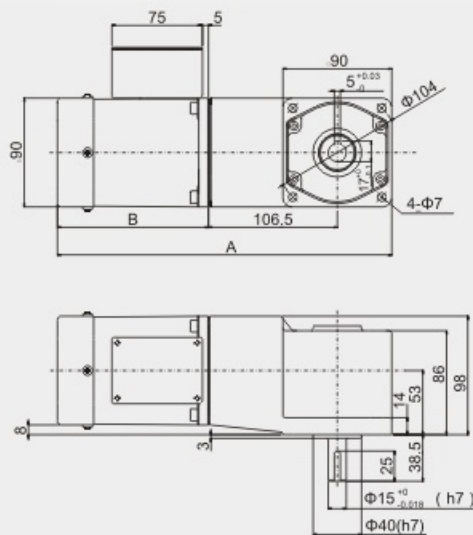
40/60YS/YR/YT/YB/YF03

Portfolio: motor + eared gear
Reduction ratio: 1:3~200
Mass: 3.7kg



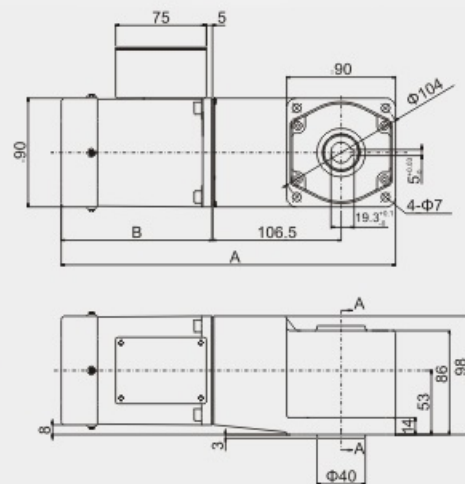
40/60YS/YR/YT/YB/YF04

Portfolio: motor + right-angle solid gearbox
Reduction ratio: 1:3~200
Mass: 5.4kg



40/60YS/YR/YT/YB/YF05

Portfolio: motor + right angle hollow gearbox
Reduction ratio: 1:3~200
Mass: 5.3kg



No.	Motor type	A	B
1	YS/YR	276.5	125
2	YT	287.5	136
3	YB	311.5	160
4	YF	323.5	172

