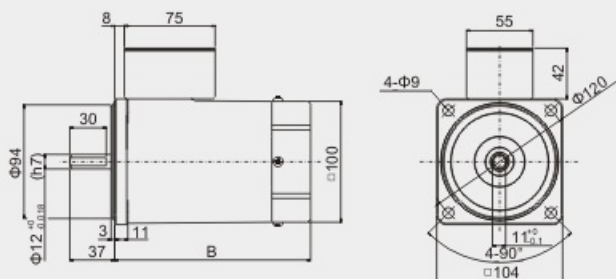


(CAD)DIMENSIONS

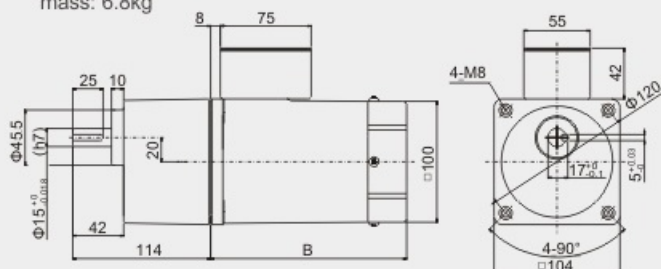
140/200YS/YT/YB/YF01

Round-axis motor, mass: 4.6kg



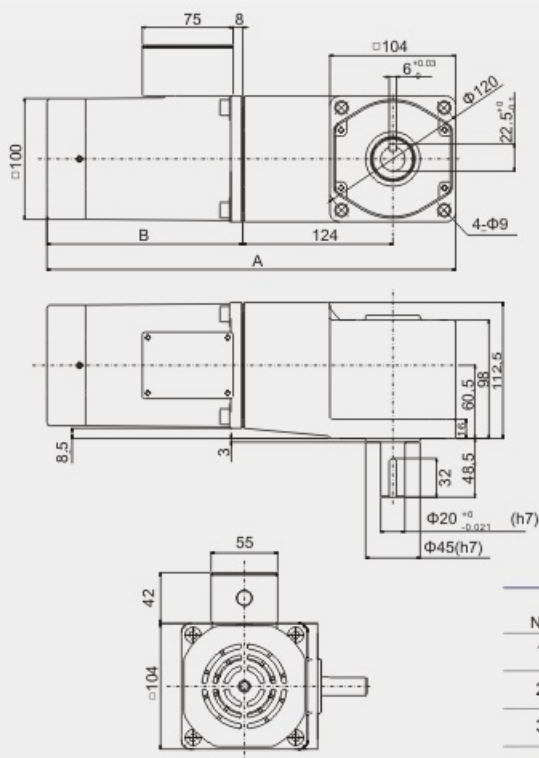
140/200YS/YT/YB/YF02

Portfolio: motor + standard reducer (reduction ratio: 1:3~200)
mass: 6.8kg



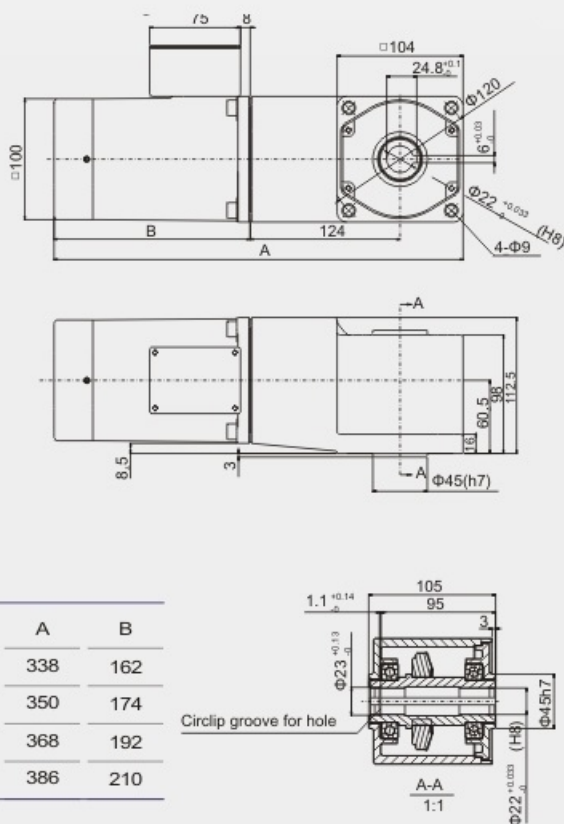
140/200YS/YT/YB/YF03

Portfolio: motor + right-angle solid gearbox
Reduction ratio: 1:3~200
Mass: 8.8kg



140/200YS/YT/YB/YF04

Portfolio: motor + right angle hollow gearbox
Reduction ratio: 1:3~200
Mass: 8.6kg



No.	Motor type	A	B
1	YS	338	162
2	YT	350	174
3	YB	368	192
4	YF	386	210

